

# MISSISSIPPI MUSIC TEACHER

The Official Publication of the Mississippi Music Teachers Association

Affiliated with the Music Teachers National Association

## Featuring Pictures from 2010 Fall Conference at Delta State University

*Bologna Performing Arts Center (top), Entrance into DSU (bottom)*



## WINTER 2011 VOL. 27, ISSUE 1

### Table of Contents



#### Officer Reports

1



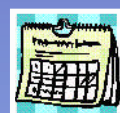
#### Competition Winners

10



#### Affiliate Reports

12



#### Upcoming Events

15

## Message from the President

I feel truly honored to have been asked to serve as MMTA President for the next two years. It is a privilege to serve alongside some very dedicated and esteemed colleagues who have proven both capable and efficient in pursuit of our goals as music educators in the State of Mississippi. I would ask membership to remember that those serving on the Executive Board are elected officials and that they

serve in a volunteer capacity. Please take a moment to offer some encouragement once in a while and make every attempt to respect their feelings and time constraints as they strive to serve you.

In collaboration with many of you, I look forward to making some positive changes in our organization over the next two years. *(Continued on p. 2)*

## Message from the President (continued)

I will try to make myself as available to all members as possible and continue to provide openness and transparency in the process. We are all busy people. There are times when I may not be available due to work, travel or family obligations. That will be especially true over the next few months as I am on sabbatical leave this semester and will be travelling quite a bit. I will always respond to issues and queries as soon as possible and I look forward to making many new friends.

Our Fall Conference at Delta State University ran very smoothly thanks to our local hosts, Karen Fosheim and Jung-Won Shin. Randall Faber took on the roles of both guest artist and presenter and he charmed participants with his warm personality and informative presentations. I was also very pleased with the number of members willing to present this time. Member participation has been well received and I look forward to seeing new faces presenting in the future. Many thanks to all of the members of the Conference Committee for their hard work in making the 2010 Conference a true success.

That said, the attendance at our Conference was not good. Low attendance has concerned many of us for some time. Living in the northern part of the state and having travelled to Hattiesburg or Ellisville many times, I must confess that I have little sympathy for those who state that it is too far to travel when this event occurs but once a year and the organization is attempting to serve all of the State. Low participation also affects the morale of those in attendance and is somewhat embarrassing to explain to guest artists, presenters and judges. I understand that there will be times when health issues or expense may play a significant role in one's decision to attend the Conference. Member participation was the real impetus behind my idea for the MMTA Survey, which was designed to give members the opportunity to anonymously participate in the process by providing feedback so that we may better serve. Unfortunately, the number of responses has been very low and that is discouraging. Nonetheless, the results will be included in the upcoming MMT. Please know that we will discuss the comments from those of you who did respond with suggestions. It is also not too late to go on line to complete the survey from the link on our home page.

Janine Beasley is doing a wonderful job of keeping our web site updated. Take a moment to check your contact information on the "Members Login" page to make sure everything is current. Please keep apprised of the dates and requirements for the MMTA Collegiate Competitions coming up on March 5 at Delta State University as well as your local Pre-College Evaluations in early April. The Pre-College Finals will be hosted by Mississippi College in Clinton on May 14 this year, a little later than usual. The Fall MMTA Conference will be hosted by Jones County Junior College in Ellisville from November 3-5, 2011. I look forward to attending the MTNA National Conference in

Milwaukee at the end of March and will report back to you on any substantive issues.

I hope you all have a rewarding and productive 2011. Let's keep the lines of communication open and please participate in the process!

Sincerely,

*Ian Hominick*



*Ian Hominick*

*Barbara Tracey*

## President-Elect's Message

It's 2011 and I'm beginning a new job with new duties and lots of challenges. Musicians run into challenges all the time and learn how musical challenges can be both an exhilarating and humbling experience. The challenges usually require lots of wisdom and time in the practice room plus the fun of working with fellow musicians. I hope we will see positive results with our grant request and be able to present a successful and inspiring 2011 conference. One of my personal goals in this new job is to plan valuable and useful programs and to increase membership participation.

Our 2011 conference will be held November 3-5 at Jones County Junior College in Ellisville, MS. JCJC has a strong music program, and the location is close to two other strong music schools, USM and WCU. MMTA appreciates

the invitation, and we all look forward to working with our faculty hosts at JCJC and the Jones County local affiliate. Chamber music is the theme for this year's artist. Since our conference artist concert is open to the public, we hope to select a group that will draw attendees from the JCJC student body, neighboring universities, and the Ellisville community. We are also working on bringing a nationally known piano clinician to the conference. We have a small group of teachers in our Vicksburg area, but we had a high percentage of attendance at the recent DSU conference. I realize that our travel time was under two hours, but the interest was generated because we had members presenting, entering students in MTNA events, and accompanying. We hope to plan conference activities that give our members opportunities for active participation. Remember that your students can participate in the Conference Concerto competition and the MTNA competitions especially since 2012 Southern Division will be hosted by Mississippi College. Please contact me with suggestions on the 2011 conference. Ideas on presentations and other conference events are always welcome. Remember that conference attendance is open to non-MMTA members. Invite a colleague, new teacher in the area, or a student.

The conference committee is chaired by the President-Elect and includes the following members from the MMTA Board: Local Conference Coordinator, VP for Public Relations, Treasurer, VP for College and National Competitions, VP for Pre-College Evaluations, VP for Pre-College Performances, IMTF Chair, Theory and Composition Chair, and all performance area chairs. Our grant request is due at the beginning of March and will include information on our preliminary plans and possibly include a video with short clips highlighting some of our past conference events.

Respectfully submitted,

*Barbara Tracy*



# Treasurer's Report

*Michael Rushing*

**MMTA Total Cash on Hand  
(1/8/2011):**

Checking: \$9,718.77

CD 1: \$11,547.63

CD 2: \$6,673.23

**Total: \$27939.63**

## January 8, 2011--November Conference Report

### Income:

	<b>Actual</b>	<b>Budgeted</b>
Registration Fees	620	900
Meals/Banquet tickets	550	800
MTNA Comm. Composer Grant	625	625
Pre-college concertos	275	500
MTNA Competition rebates	1350	1800
<b>TOTAL</b>	<b>3420</b>	<b>4625</b>

\$1205 less than expected

### Expense:

	<b>Actual</b>	<b>Budgeted</b>
Adjudicator fees	1730	2000
Artist fees	1200	1500
Commissioned Compositions	1250	1250
Meals-Banquet/Lunch/Reception	749	800
Other	361.25	900
Program publication	594.17	800
Workshop/Masterclasses	300	450
<b>TOTAL</b>	<b>6184.42</b>	<b>7700</b>

\$1515.58 less than expected

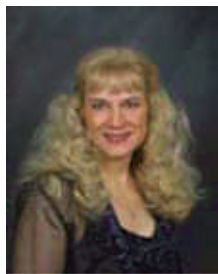
Actual income: \$3420.00

Actual expense: \$6184.42

\$-2764.42



## Vice President for Membership and Web Management



*Janine Beasley*

As of January 6, 2011, MMTA has 181 members, up from 176 on November 4.

The About page has been updated to add Sharon Lebsack (2008) and Donna Banks (2010) as MTNA fellows.

The officers page has been updated with all the information I currently have, and I emailed the officers

to request any additional information I needed. I have received most of that information and updated the site with it. I emailed all the local affiliate presidents to verify information and send corrections (and pictures) if necessary. New officer positions added were (appointed officers) Chair of College Faculty Forum (Angela Willoughby), and (performance area chairs) Collaborative Arts (Theresa Sanchez). I still have a question as to who is Assistant to VP for Public Relations, and there is still no Chair of Certification.

I added Oxford to the district map, with Adrienne Park as district chair.

I updated the calendar, including dates and location of MMTA State Conference, November 2011. I also added the conference information to the Conference page.

I went through the site trying to find and update references to contact information (on application forms, etc) and made the changes.

I have updated all the members' information on the admin site, including new members. I continue to make changes as I get requests.

I am in the process of updating 2010 winner information.

Membership dues received from MTNA: received one membership from MTNA for November; there are four for December which have not yet been received.

All the pay-pal payments (pre-college concerto, collegiate competitions, chamber) are set up to notify one email id, which is unique to our website and does not belong to anyone. There is a forwarder capability in the management area, and it is currently set up to go to Sharon Lebsack (which explains why she has been receiving notification of the payments). There are actually 3 different people in these positions, so perhaps we need to choose one to receive the notifications.

Respectfully submitted, *Janine Beasley*

## FALL CONFERENCE SNAPSHOTS



Donna Banks and Angie Willoughby working the registration table



The crowd waiting on results

**Gulf Coast  
Music  
Teachers  
Association**



**Founded 1972**

## Vice President for Pre-College Performances



*Alice Ballard*

The MMTA Pre-College Concerto Competitions were held Saturday, November 6, 2010, during the MMTA Conference at Delta State University. In the piano competition there were 4 elementary entrants, 2 junior entrants, and 2 senior entrants. In the strings competition there was 1 elementary entrant and 1 senior entrant. All

of the students gave fine performances. Congratulations are in order for all who took part in the Concerto Competitions! Be sure and see the listing of winners, participants, and teachers, available in this edition of the MMT. For next year, we would like to hear many more capable students in this important competition.

We have important dates coming up for the Pre-College Evaluations, so please mark your calendars. Group B goes first with auditions on April 2<sup>nd</sup> for students in Ellisville, Columbus, Oxford, Starkville, Vicksburg, and Wesson. Group A's auditions will take place the following Saturday, April 9, for those in the Jackson, Meridian, Tupelo, Hattiesburg/Gulf Coast, and Goodman areas. The MMTA Pre-College Finals will take place Saturday, May 14, 2011, at Mississippi College in Clinton.

Ellen Price Elder, my predecessor, did a wonderful job as the Vice-President for Pre-Colleges Performances. We should emulate her commitment to our organization.

Respectfully submitted,

*Alice Ballard*



President - Kathie Lott

Music Forum of Jackson was founded April, 1968,  
and is affiliated with MMTA and MTNA

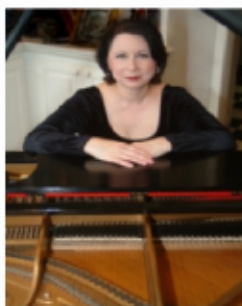
## Collaborative Arts Report

Hello to all MMTA members from your Collaborative Arts chair. I'm in a newly appointed position created last year from the national emphasis on this area and the declared "Year of Collaborative Arts" from the 2010 to 2011 national conventions. There have also been several *AMT* articles relating to various aspects of collaboration throughout the year with much useful information and enthusiastic endorsements of the collaborative arts. In fact, the designated day for collaborative concerts is January 22, later in the week from this writing. If any of you have participated in concerts on this special date, please email me about your event.

As a very active collaborative pianist, I generally play with others every week in some way, whether at school with students or with colleagues from many places. Last weekend it was my pleasure to serve as an OA (official accompanist) at MTNA's Southern Division competitions in Columbus, GA. This task is fairly pressurized, with lots of responsibility for helping our most talented student musicians realize their best performance potential, but full of joy for me as I become part of that slice of their development. Next week I collaborate with a vocal colleague, and on it goes.

That's the joy of collaboration—it just keeps one moving forward and obtaining that much more experience toward a total career-sustaining musicianship. It makes for a busy and fulfilled musical life, brings you together with all kinds of people and instruments, and naturally increases your sight-reading skills and ability to adapt and compromise musically.

We had a positive discussion on this topic at our November conference, but would like to widen it for the next one. We hope to involve the Jones County Music Teachers with their annual ensemble festival students and other groups from the area. I would love to hear suggestions from you on other sessions you would like to see at convention related to collaboration, so please drop me a line! It would also be great to list some events going on at your school or studio in the next *MMT*, either before or after the event, so please send them in either for the calendar or for a "celebration list" for collaborations.



Theresa Sanchez, Collaborative Arts Chair



---

## MMTA Member Survey Results

MMTA Members: 181

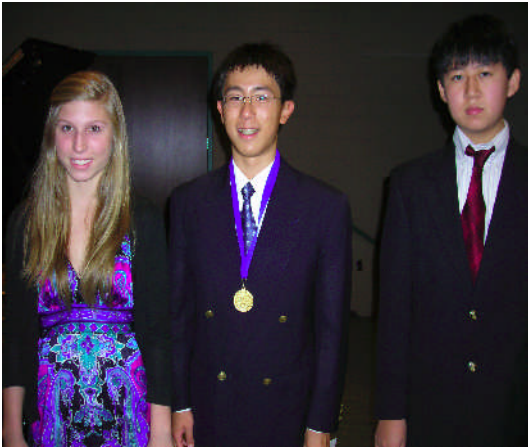
Surveys completed: 17

1. **What is your primary reason for being a member of MMTA?**
  - fellowship; having a professional affiliation; teaching certification; interaction and learning; opportunity to improve teaching skills; student competitions.
2. **What MMTA-sponsored events do you regularly attend?**
  - most respondents attended the 2010 Conference and enter students in competitions; fewer attend local meetings
3. **Do you usually attend your local affiliate meetings?**  
YES (10)      NO (6)      NA (1)
4. **Did you attend the 2010 MMTA Conference at Delta State University?**  
YES (10)      NO (6)      NA (1)
5. **If you did attend, what did you like or dislike about the program?**
  - Liked:**
    - member presentations & the way they tended to overlap thematically
    - Randall Faber was inspiring & approachable
    - fellowship with colleagues
    - sessions on pre-college teaching
    - event was smoothly run
    - good for student competitors to visit different colleges
  - Disliked:**
    - weather & building climate control
    - meetings/sessions should be run more punctual
    - competitions and modules overlapped so could not go to both
    - rearranged rehearsal with accompanist inconvenient due to school absentee policy (made student nervous)
    - conference should be a one-day event; no banquet; no concerts
    - presenter rooms too spread out
    - everything was not handicap accessible
    - distance to travel/ expense
6. **If you did not attend, would you please indicate a reason and offer suggestions you feel would make our annual conference more appealing to the general membership?**
  - health issues      – timing and distance



- 
7. **Do you have any concerns or issues that you would like the MMTA Board to address?**
- more student participation at the Conference
  - a renewed effort to explain MMTA’s mission to membership
  - more info on current teaching software
  - no newcomers attend the events/ overall attendance
  - more communication from the Board to membership
  - more communication between Board members
  - change in Conference format
  - more activities for non-piano members
  - addressing the increasing lack of interest in instrumental study
  - upper grade-level standards are unrealistic for the majority of piano students; perhaps adopt an “advanced” category?
8. **In what ways does MMTA serve it’s members well?**
- Conference does a good job of re-energizing for the remainder of the teaching year
  - interaction with colleagues at local affiliate meetings
  - good mix of independent and collegiate teachers
  - opportunities for students to perform and compete
  - attaining standards
  - manages finances well
  - professional development opportunities
  - publications and programs during the year
  - Conference with noted guest artists and presenters
  - keeping members updated on opportunities for advancement
  - providing a comprehensive syllabus for teaching guidelines
  - good communication with teachers
  - good for setting student goals for the year
  - MMTA is more accessible than Federation or NATS
9. **In what ways does MMTA NOT serve it’s members well?**
- need more interaction with members to maintain interest
  - should offer guest performance opportunities at local affiliate meetings
  - far too “pianocentric”
  - have the Executive Board minutes published on the web site
  - issue invitations to the Past Presidents for the annual luncheon at Conference
10. **Do you have any suggestions for recruiting new members to our organization?**
- do something different (monster concert idea is good)
  - conduct a research study on internet or through old AMT’s for presentation topics
  - design and print invitation cards and distribute to members to hand out to prospective new members
  - phone and/or send a newsletter to all musicians
  - urge local affiliates to recruit more
  - take a program into areas where membership is sparse
  - develop student chapters at universities
  - reach out to the school music teachers who typically cannot attend the usual morning affiliate meetings
  - state-wide advertising or publicity campaign
  - offer something more to a broader pool of musicians
11. **Would you consider serving on the MMTA Board at some point in the future?**  
YES (6)      NO (7)      NA (4)
12. **If so, what position(s) are of the most interest to you?**
- one anonymous reply would like to serve as Woodwinds Area Chair
-

## Competition Winners



### Junior and Senior Division Piano

Julie Laurenzo (Junior Alternate)

Taide Ding (Senior Winner)

Austin Li (Junior Winner)



### Chamber Music Alternate

#### Translation Brass

Thomas Gray, Ismael Brandao,

Eddie Muller, Mackenzie

Edgley, Patrick Richards

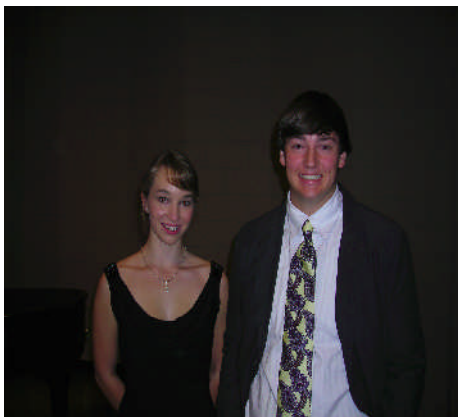


### Chamber Music Winner

#### Euphoria

Koty Cox, Diana Hunt, Eric Fry,

Lindsey Daniels



### Senior Voice (L to R)

McKenzie Pollock

(Honorable Mention)

Chance Ragsdale (Alternate)



### Senior Voice Winner

John McCann



**Young Artist  
Woodwinds Winner**  
Thomas Giles



**Senior Strings  
Concerto Winner**  
Rosalie Doerksen



**Elementary Strings  
Concerto Winner**  
Dylan Howard



**Elementary Piano  
Concerto (L to R)**  
Tracey Singer (winner)  
Jane Fan (1st alternate)  
Maggie Cayson and  
Logan Knight  
(2nd alternates)



**Senior Piano Concerto**  
Taide Ding (winner)  
Dora Young Chin  
(1st alternate)



**Junior Piano Concerto  
(L to R)**  
Joanna Richards  
Taylor Weeks  
Helen Shi (winner)

***Congratulations to the following students for placing in the MTNA Southern Division Competitions:***

**Young Artist**

Honorable Mention: Nathanael Minor, French Horn,  
Heidi Lucas, teacher

Honorable Mention: Thomas Giles, Saxophone,  
Lawrence Gwodz, teacher

**Senior Division**

Alternate: Taide Ding, Piano, Ian Hominick, teacher

Honorable Mention: John McCann, Voice, Yvonne  
Young-McGrath, teacher



## Affiliate News



### JONES COUNTY MUSIC TEACHERS ASSOCIATION

Janine Beasley, President

JCMTA held its annual Showcase and Composer recital on Sunday, November 14, 2010.

The JCMTA annual Solo-Sonata competition will be held on Saturday, January 22, 2011. The annual Ensemble Festival will be held on Saturday, March 5, 2011. JCMTA will participate in the Ellisville district MMTA Evaluations on Saturday, April 2, 2011.

A meeting was held on November 14, 2010, prior to the Showcase and Composer Recital, to discuss general business.

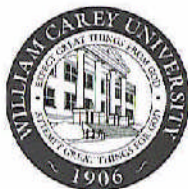
Ellen Gunn fell at home this past week and broke her hip, and has had a total hip replacement. She is in Wesley Medical Center in room 367 as of Friday, January 7, but will probably be moved to the rehab, on 4th floor at Wesley, Saturday. She plans to have therapy as soon as possible. We wish her the speediest possible recovery!

Respectfully submitted,

Janine Beasley

**The Winters School of Music  
William Carey University  
Hattiesburg, Mississippi**

**Earn the  
Master of Music  
in Music Education  
Degree in One Year**



[www.wmcarey.edu](http://www.wmcarey.edu)

#### Degrees Offered

- B.M. in Music Education, Music Therapy, Church Music, and Performance (guitar, organ, piano, voice)
- B.A. in Music
- M.M. in Music Education

Also, the Carey Institute of Fine Arts (CIFA) offers private and group instruction to non-credit students of all ages.

#### Faculty

- Music Therapy: Paul Cotten, Jim Pierce
- Music Education: Mark Malone
- Performance: Ellen Elder (piano), Rudy Gatlin (voice), Trevor Hunt (guitar), Connie Roberts (voice), Kathy Vail (organ), Gene Winters (voice)
- Theory: Howard Keever
- Instrumental: Wes Cameron, Rachel Ciraldo, Nathan Lambert

#### M.M. Degree

- 30 hours of coursework that includes applied music and ensembles
- Two summers in-residence and three online classes during the school year
- Flexible thesis or non-thesis tracks
- Online application requires a bachelor's degree in music with either a valid teacher's license or passing scores on Praxis I and II for acceptance.

#### For more information, contact:

Mark Hugh Malone, Ph.D.  
(601) 318-6177 • [mark.malone@wmcarey.edu](mailto:mark.malone@wmcarey.edu)

## MSU Students Perform at Starkville Public Library in Recognition of ICDM

In recognition of MTNA's International Day of Collaborative Music on January 22, MSU's Collaborative Piano (CP) Ensemble class joined musicians from across North America by presenting a performance of varied and entertaining music at the Starkville Public Library. Such classical standards as Schubert's *Nacht und Traume* and Puccini's *Ch il bel sogno*, as well as musical theatre selections were included in the performance. During the program, 3<sup>rd</sup>-6<sup>th</sup> graders were also engaged with fun interactive games that demonstrate awareness, cooperation and trust – concepts useful in musical collaborations. Karen Murphy, N.C.T.M. is the instructor of the class and a member of the Golden Triangle Music Forum.



From left to right: Aaron Mann, Elizabeth Jones, Roxanne Ditto, Allen Sanders, Hollyn White.

**HATTIESBURG MUSIC TEACHERS LEAGUE** held its first meeting of the academic year on September 11, 2010, in Marsh Auditorium at the University of Southern Mississippi. Our guest presenter was Petronel Malan, South African concert pianist and Grammy award nominee. She presented a lecture on "The Non-Method of Theodore Leschetizky and the Legacy of his Students." Leschetizky taught such noted artists as Schnabel, Paderewski, and Friedman, as well as one of Ms. Malan's former teachers. Her lecture also featured a CD of performances by his students. This program was sponsored by the Hattiesburg Music Teachers League and the Jones County Music Teachers Association.

HMTL will hold its second meeting of the academic year on January 22, 2011, at the University of Southern Mississippi. Our guest presenter will be Mr. Lonnie Young, Registered Piano Technician. This meeting will also serve as a workday, as we prepare for the upcoming NFMC festival, which will be held February 19, 2011, at William Carey University.

On October 30, 2010, the HMTL presented our first of three Saturday student recital programs. The recital was held at Mississippi Music, Co. in Hattiesburg.

We welcome several new members to our organization: Mariana Aldana, Mary Chung, Katherine Dedeaux, and Tae Young Hong.

We are pleased to announce that **Dennis Alexander** has accepted our invitation to serve as our guest composer for our November 2011 Composer Festival.

It is with great sadness that I must report that Robert Mesrobian, husband of Jan Mesrobian, and long-time member of HMTL passed away in October. He will be greatly missed but his legacy will live on in the performances of the Hattiesburg Civic Light Opera which he founded, and the lives of the students that he touched.

Ellen Price Elder, DMA

HMTL President

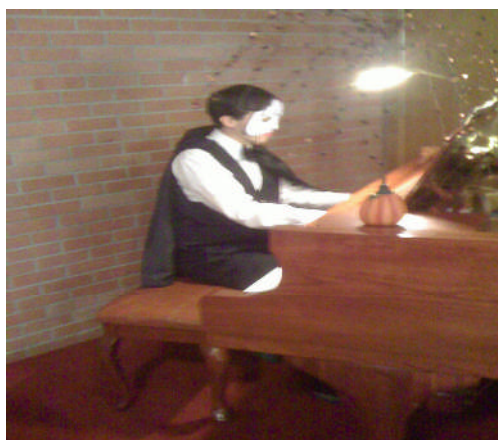


The **VICKSBURG MUSIC TEACHERS ASSOCIATION** met in mid-January, and welcomed new member, Dr. Julia Mortyakova. She is the new professor of piano at Alcorn State University. Our group now has nine members! Barbara Tracy reported on the Executive Board meeting.

We held our annual Boys Recital on Halloween, and everyone including the teachers came in costume. At the reception following, a poll was taken of the favorite costume and prizes were given to the top three favorites. Wearing a costume really made the recital fun for everyone, especially the Mistress of Ceremonies, “Lady Tarantula” (Jeanne Evans). Barbara Tracy really rocked as ‘Pink,’ and Denise Ragsdale was a cute ‘Groucho Marx.’ A special Girls Recital is scheduled for February 20, to celebrate the season of hearts and flowers – Valentines! Students will dress up and wear a hat for a tea-time reception following the recital. Our local MMTA evaluations are set for April 2.

--Jeanne Evans

President, VMTA



The Phantom: Stephen Hensley; The Shadow and Groucho Marx: Chance and Denise Ragsdale; Sebastian the Crab: Stephen Wagner



## Upcoming Events

### **Announcing the 2011 Alcorn State University Piano Competition**

March 26, 2011 - Celebrating Women's History Month

<http://www.alcornstatepianocompetition.com/>

Deadline to apply: March 5

Open to all pianists from across the United States who satisfy the following criteria:

Level 1 (13 years old and younger)

Level 2 (14-17 years old)

Level 3 (18-26 years old)

Level 4 - Amateurs (adults who are not professional musicians)

Prizes awarded in each category!

Questions: contact Dr. Julia Mortyakova, chair of the ASU Piano Competition

[jmortyakova@alcorn.edu](mailto:jmortyakova@alcorn.edu)

**Jones County Junior College  
Music Department**

900 S. Court St.  
Ellisville, Mississippi 39437  
(601) 477-4094

**Susan A. Smith, Chair**

<b>Sammy Barr, Band</b>	<b>Clinton Nichols, Voice</b>
<b>Mike Boyd, Guitar</b>	<b>Michael Rushing, Piano</b>
<b>Jeff Brown, Percussion</b>	<b>Theresa Sanchez, Piano</b>
<b>Kay Guiles, Piano/Organ</b>	<b>Susan A. Smith, Voice/Theory</b>
<b>Nikki Johnson, Theater/Voice</b>	<b>Carrie Strickland, High Brass</b>
<b>Meri Newell, Woodwinds</b>	<b>Mark Taylor, Choir</b>
<b>Matthew Pickering, Low Brass/Band</b>	

[www.jcjc.edu/programs/finearts](http://www.jcjc.edu/programs/finearts)



Mississippi's  
First  
Local  
Affiliate

Founded 1964

# June 12 – 18, 2011

for students entering grades 7 through 12

- private lessons; master classes; literature; ensemble; technique; sight-reading; music technology & optional lessons on organ, harpsichord, marimba & xylophone
- lots of recreational activities including yoga; steel drumming; double-decker bus tour; pizza & movie night and The Oxford Shakespeare Festival

## GUEST ARTIST

### Adam Swanson

• 18-yr. old three-time  
World Junior Ragtime  
Champion

• 2010 Senior Ragtime  
Champion



Adam Swanson is rapidly becoming known as one of the world's foremost performers and historians of ragtime and early American popular music. He has been a featured performer at ragtime and jazz festivals across the United States and abroad.

[www.adamgswanson.com](http://www.adamgswanson.com)

**PLUS** guest clinician **Victoria Johnson**

## CAMP FACULTY

- Ian Hominick ~ Camp Director
- Stacy Rodgers
- Adrienne Park
- Diane Wang
- Warren Steel, organ
- David Carlisle, mallets

Come and enjoy a week of learning, fun and making new friends on the beautiful Ole Miss campus!

**REGISTRATION DEADLINE: MAY 20, 2011**

**Encourage your students to enroll for an educational and fun-filled week!**

<http://www.outreach.olemiss.edu/youth/piano/>



*The University of Mississippi*



## Mark Your Calendar

February 5, 2011 – Bach Festival

March 5, 2011 – MMTA Collegiate Competition at Delta State University

March 26-30, 2011 – MTNA National Conference, Milwaukee, Wisconsin

April 2, 2011 – MMTA Pre-College Evaluations (Group B)

April 9, 2011 – MMTA Pre-College Evaluations (Group A)

April 16, 2011 – MVSU Piano Festival, Itta Bena (*Contact Lawrence Goldman for details*)

May 14, 2011 – MMTA Pre-College Finals at Mississippi College

November 3-5, 2011 – MMTA State Conference at Jones County Junior College, Ellisville



*The heart of music is not in your voice or your fingers.  
It is not in the cold brass or lifeless wood of instruments.  
It exists only in the reality that lies within your soul.  
The heart of music is you.*

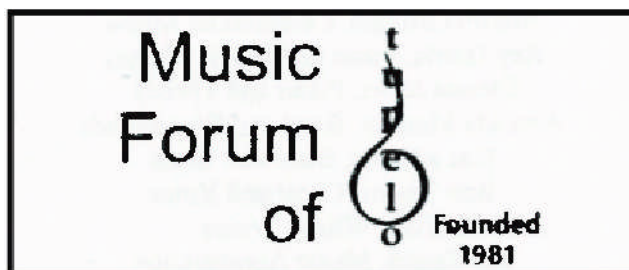
*At the Rudi E. Scheidt School of Music, we hear the song that is in you. We respect it. We nurture and train it. And we help it to find its way in the world.*

*Master your gifts at the U of M. It's affordable, it's distinguished, and it feels just right. Brilliant faculty prepare and inspire you, a world-renowned musical heritage awaits you, and opportunities to shine surround you. The University of Memphis—where aspiring musicians come to find the heart of music.*

memphis.edu/music  
music@memphis.edu  
901.676.3766

A Tennessee Board of Regents  
member of the Board of Regents  
Affirming Academic Excellence

**THE UNIVERSITY OF  
MEMPHIS.**  
Rudi E. Scheidt School of Music





THE DEPARTMENT OF *Music*

- Private Liberal Arts College
- 80 undergraduate majors
- 12 full-time faculty
- Fully accredited by National Association of Schools of Music
- Scholarships available to undergraduate majors
- Assistantships available to graduate students

**BACHELOR'S DEGREES**

Music Education | Church Music | Applied Areas  
Music Theatre | Theory/Composition


**MASTER'S DEGREES**

Music Education | Conducting | Applied Areas  
Vocal Pedagogy/Performance | Piano Pedagogy

**PERFORMANCE ENSEMBLES**

Singers | Women's Chamber | Men's Glee  
Mixed Company, a vocal jazz ensemble  
Opera/Music Theatre Production | Symphonic Winds  
Marching/Football Band | Jazz Band | Fall Concert Band

For more information, please contact:  
THE MISSISSIPPI COLLEGE DEPARTMENT OF MUSIC  
601-925-3440 | MUSIC@MC.EDU | MUSIC.MC.EDU

 **Mississippi College**  
A CHRISTIAN UNIVERSITY

Mississippi Music Teacher is published online three times per year. Address all communications, articles, and pictures to the Editor. The MMT is available to the public on the MMTA website in PDF format.

**ADVERTISING:** Limited advertising space is available for firms or individuals who have a product or service of specific interest or benefit to MMTA members. All correspondence regarding advertising should be sent to the VP for Public Relations.

#### YEARLY ADVERTISING RATES (size in inches)

2 1/4 x 1	\$70	2 1/4 x 2 1/4	\$120
2 1/4 x 4 5/8	\$170	2 1/4 x 7	\$240
4 5/8 x 4 5/8	\$275	4 5/8 x 7 (half page)	\$500
7 x 9 1/4 (full page)	\$900		

Conference printed edition ads can be purchased for that one edition for 1/3 of the above prices.



---

## MMTA Officers

### President

Ian Hominick  
432 Cherokee Drive  
Oxford, MS 38655  
Phone: 662-513-4994  
Work: 662-915-1282  
[ihominic@olemiss.edu](mailto:ihominic@olemiss.edu)

### President Elect

Barbara Tracy  
617 Holly Ridge Drive  
Vicksburg, MS 39180  
Phone: 601-638-3453  
[tracy@vicksburg.com](mailto:tracy@vicksburg.com)

### Immediate Past President

Rachel Heard  
3821 Montrose Circle  
Jackson, MS 39216  
Phone: 601-987-8414  
[heardr@millsaps.edu](mailto:heardr@millsaps.edu)

### VP for Membership & Web Management

Janine Beasley  
3122 N 5th Ave.  
Laurel, MS 39440  
Phone: 601-649-9240  
[music@beasinc.com](mailto:music@beasinc.com)

### VP for Collegiate & National Competitions

Ellen Price Elder  
William Carey University  
498 Tuscan Ave.; Box 14  
Hattiesburg, MS 39401  
Phone: 601-467-9745  
Work: 601-318-6179  
[ellen@ellenelder.com](mailto:ellen@ellenelder.com)

### VP for Pre-College Performances

Alice Ballard  
Hinds Community College  
P.O. Box 1100  
Raymond, MS 39154  
Phone: 769-226-7038  
Work: 601-857-3528  
[Alice.Ballard@hindsccl.edu](mailto:Alice.Ballard@hindsccl.edu)

### VP for Pre-College Evaluations

Rita Caviness  
11235 Cypress Bayou Dr  
Gulfport, MS 39503  
Phone: 228-669-1539  
[capriccio1@gmail.com](mailto:capriccio1@gmail.com)

### VP for Public Relations (Newsletter Editor)

Stephanie Holmes  
210 W. Adams St., Apt. C  
Kosciusko, MS 39090  
Phone: 662-417-1390  
Work: 662-289-3575  
[seholmes2@hotmail.com](mailto:seholmes2@hotmail.com)

### Secretary

Yvonne Young-McGrath  
753 Canterbury Dr  
Biloxi, MS 39532-4303  
Phone: 228-617-9127  
[mcgmomx4@hotmail.com](mailto:mcgmomx4@hotmail.com)

### Treasurer

Michael Rushing  
1034 RN Whitfield St.  
Florence, MS 39073  
Phone: 601-573-1068  
[mrushing@mc.edu](mailto:mrushing@mc.edu)

### Appointed Officers

#### Chair of Theory & Composition

Benjamin Williams  
1221 Cliffdale Dr  
Clinton, MS 39056  
Phone: 601-925-7739  
[benwilliams@mc.edu](mailto:benwilliams@mc.edu)

#### Chair of Independent Music Teachers Forum

Rosangela Yazbec Sebba  
P.O. Box 6240  
Mississippi State, MS 39762  
Phone: 662-325-2854  
[rys3@colled.msstate.edu](mailto:rys3@colled.msstate.edu)

**Chair of College Faculty Forum**

Angela Willoughby  
100 Murial St  
Clinton, MS 39056  
Phone: 601-906-8040  
[willough@mc.edu](mailto:willough@mc.edu)

**Chair of Certification**

Position not filled

**Assistant to the VP for Public Relations**

Position not filled

**Webmaster**

Handmade Designs  
Toll Free 1-877-467-2660  
[www.handmadedesigns.com](http://www.handmadedesigns.com)

**Performance Area Chairs****Brass**

Douglas Mark  
Delta State University  
Department of Music  
PO Box 3256  
Cleveland, MS 38733  
Phone: 662-846-4607  
[dmark@deltastate.edu](mailto:dmark@deltastate.edu)

**Chamber Music/Jazz**

Jung-Won Shin  
Delta State University  
Department of Music  
PO Box 3256  
Cleveland, MS 38733  
Phone: 662-846-4123  
[jshin@deltastate.edu](mailto:jshin@deltastate.edu)

**Guitar**

Nicholas Ciraldo, DMA  
University of Southern Mississippi  
118 College Drive #5081  
Hattiesburg, MS 39406  
Office: 601-266-5401  
[nicholas.ciraldo@usm.edu](mailto:nicholas.ciraldo@usm.edu)

**Piano**

Karen Fosheim  
PO Box 3256  
Cleveland, MS 38733  
Phone: 662-846-4622  
[kfosheim@deltastate.edu](mailto:kfosheim@deltastate.edu)

**Strings**

Alexander Russakovsky  
University of Southern Mississippi  
School of Music  
118 College Drive, # 5081  
Hattiesburg, MS 39406  
Phone: 601-266 6851  
[arussakovsky@hotmail.com](mailto:arussakovsky@hotmail.com)

**Voice**

Phyllis Lewis-Hale  
Jackson State University  
Department of Music  
P.O. Box 17055  
Jackson, MS 39217  
Phone: 601-979-2984  
[phyllis.lewis-hale@jsums.edu](mailto:phyllis.lewis-hale@jsums.edu)

**Woodwinds**

Shelley Collins  
Delta State University  
Department of Music  
PO Box 3256  
Cleveland, MS 38733  
Phone: 662-846-4617  
[scollins@deltastate.edu](mailto:scollins@deltastate.edu)

**Collaborative Arts**

Theresa Sanchez, NCTM  
907 N 34th Ave  
Hattiesburg, MS 39401  
Phone: 601-271-8700  
[theresa.sanchez@jcc.edu](mailto:theresa.sanchez@jcc.edu)

**Local Affiliates****Golden Triangle Music Forum**

Ricki Prewitt  
11 Lakes Boulevard  
Starkville, MS 39759  
Phone: 662-324-9393  
Cell: 662-312-3136

**Gulf Coast MTA**

Yvonne Young-McGrath  
753 Canterbury Dr  
Biloxi, MS 39532-4303  
Phone: 228-617-9127  
[mcgmomx4@hotmail.com](mailto:mcgmomx4@hotmail.com)

**Hattiesburg Music Teachers League**

Ellen Price Elder  
William Carey University  
498 Tuscan Ave.; Box 14  
Hattiesburg, MS 39401  
Phone: 601-467-9745  
Work: 601-318-6179  
[ellen@ellenelder.com](mailto:ellen@ellenelder.com)

**Jones County MTA**

Janine Beasley  
3122 N 5th Ave.  
Laurel, MS 39440  
Phone: 601-649-9240  
[music@beasinc.com](mailto:music@beasinc.com)

**League of Meridian Music Teachers**

June Williams  
100 38th St.  
Meridian, MS 39301  
Phone: 601-482-4107

**Music Forum of Jackson**

Greta Barbour Mills  
817 Arlington St  
Jackson, MS 39202-1619  
Phone: 601-353-5305  
[gretabarbourmills@att.net](mailto:gretabarbourmills@att.net)

**Music Forum of Tupelo**

Peggy Oakes  
2012 Strain St.  
Tupelo, MS 38804  
[oakesp@bellsouth.net](mailto:oakesp@bellsouth.net)

**Vicksburg MTA**

Jeanne Evans  
3140 Drummond St  
Vicksburg, MS 39180-4912  
Phone: 601-634-0826  
[aieyans88@bellsouth.net](mailto:aieyans88@bellsouth.net)

---

## From the MMT Editor

My first attempt at putting together the MMT has been interesting to say the least. It has been a learning experience! As I was working on this newsletter, I was thinking about my beginner piano students. My “babies” are sometimes overwhelmed by this new world of music they are being introduced to, and I experienced that feeling as I was learning how to put together the newsletter on a new computer with new software. I’ve learned a lot the past few weeks. I hope my students can say the same at the end of the year.

I want to thank Darwin Brooks for making the transition process to this new job easy for me. He had everything organized and ready to go for me when he passed the boxes and has allowed me to pester him with questions. Also, thank you all for your submissions. I apologize for anything I may have left out this time around. If there is anything you would like to see in the MMT, please let me know. I look forward to serving as your Vice President of Public Relations.

Sincerely, Stephanie Holmes

seholmes2@hotmail.com



*Stephanie Holmes*

*Editor*

---

*Membership in Mississippi Music Teachers Association is open to individuals professionally engaged in any field of musical activity. Since MMTA is a state affiliate of Music Teachers National Association, all membership is handled through national headquarters. Please check the MTNA website <http://www.mtna.org/home.htm> or the MMTA VP for Membership for membership information or application forms.*

---

### MISSISSIPPI MUSIC TEACHER

---

Stephanie Holmes, editor

210 W. Adams St., Apt. C  
Kosciusko, Mississippi 39090



**Find us on the web!**

**<http://msmusicteachers.org>**

## *Mississippi Music Teachers Association*

**Est. 1954**

*The purpose and goals of the Mississippi Music Teachers Association are to further the art of music, and promote the growth and professional development of its members by providing programs that encourage and support teaching, performance, composition and research. MMTA is a not-for-profit organization whose funds are used solely to accomplish these objectives.*