

# MISSISSIPPI MUSIC TEACHER

The Official Publication of the Mississippi Music Teachers Association

Affiliated with the Music Teachers National Association

Plan to attend our 2011  
Conference November 4-5 at  
Jones County Junior College in  
Ellisville.



SUMMER 2011 Vol. 27, Issue 2

## Table of Contents



Officer Reports

1



Affiliate News

11



Fall Conference

15



Upcoming Events

22

## Message from the President

Another school year has begun and I wish nothing but the best for all of our members as we face the great "unknowns" that a fresh year brings. I wish to briefly discuss a few items as we look forward to gaining momentum both individually and as a group. Individually, we all have goals that we wish to pursue and I sincerely wish you success in attaining your "dream-situation." Everyone possesses a comfort zone and sometimes it is difficult, or challenging, to take a step outside that secure place. Collectively, we have so much to offer to our students, our institutions and our colleagues. I would like to challenge each and every one of you to step up, contribute and share your expertise and ideas during the coming year.

I encourage you to take advantage of both the opportunities our association has to offer and the talent that our membership has to share. Barbara Tracy has done a wonderful job of lining up some engaging guest and member presentations for our upcoming conference in November.

## Message from the President (continued)

The program shows diversity such that there is something for everyone. Please set aside these two days in November to join us in Ellisville and take advantage of the various presentations and performances that occur but once a year. We have designed a weekend that includes more student involvement beyond the competitive events and I sincerely hope that this is a trend we can continue. It is important for our organization to increase attendance and encourage participation. It is beneficial to you as a teacher and musician to use this situation to rejuvenate and communicate with like-minded colleagues. Thank you to Theresa Sanchez, Victoria Johnson and Kay Guiles for assisting Barbara in the conference preparations at Jones Junior College as the time for our annual gathering nears.

As many of you are aware, there has been a recent decision by MTNA to eliminate all non-piano competitions beginning in 2013. I thank those of you who have written letters to the national office expressing your opposition to this decision. I shared my letter with you earlier and I have received a response from Gary Ingle, among others. To quote Mr. Ingle, "... the Board deliberated at length and in depth, knowing the decision would be controversial and unpopular with many of our members. As you can imagine, we have received a great deal of response already, from many who support the decision and from many who disagree with it. Please know that, as your elected leaders, the MTNA Board of Directors is committed to being responsive as well as responsible to our members like you in carrying out its fiduciary duties to care for the whole association."

Responses from other officials leave me hope that this decision to isolate our instrumental and vocal colleagues may be reversed, but only time will tell. Nonetheless, we need our friends to know that their involvement and expertise is necessary to our organization, and regardless of what happens with the decision at the national level, they are always welcome and valued members of MMTA. State-wide pre-college and collegiate competitions will always be open to instrumental, vocal and piano students.

On the heels of this announcement, it makes me feel a bit conspicuous to push the following matter ... recruitment and retention of members. MTNA has an "Each One / Reach One" campaign they have been pushing of late. Our membership has dropped over the past several years and has likely been affected by the downturn in the economy. I know there are many music teachers in our State who are not familiar with

MMTA and the programs we offer. Please make a point this Fall to speak to at least one non-member and invite them to attend our Convention in November or invite them to a local affiliate meeting. In an effort to attract non-members to our organization, we have set our registration for Conference so that it is the same fee for both members and non-members. If you know of teachers who have allowed their membership to lapse, please do all you can to encourage them to rejoin our group.

In my recent e-mail, I asked you to review the music theory curriculum offered by the Royal Conservatory of Music in their joint effort with Carnegie Hall to offer a national "standard" for testing music students at all levels. The most obvious benefit to us would be the access to a well-designed set of examinations which are readily available on an annual basis. The detriment would be the cost involved in ordering these exams. From the few of you who have responded, my suspicions are confirmed and it appears unlikely that we will utilize the RCM examinations due to the cost involved.



Ian Hominick

Finally, I would like to express my appreciation to all of the new members on the MMTA Executive Board who have done such a marvelous job over the past year. All of us are volunteers and some positions require a much greater amount of time and effort than others. It has been my pleasure to work with each and every officer and to try to make a difference whenever possible. As always, keep open the lines of communication and be in touch if you have any suggestions on how we may improve to meet our membership's needs.

So the words of wisdom for the upcoming year ... thrive ... participate .... recruit .... and reap the rewards!



**THE KEYS TO SUCCESS  
ARE AT OLE MISS**

At The University of Mississippi, your students will study with our outstanding piano faculty as well as gain a superior overall education.

**Degrees with  
an emphasis in piano**

- Bachelor of Music in performance
- Bachelor of Music in music education
- Bachelor of Arts in music
- Master of Music in performance

**Scholarships**

Generous scholarships available.  
For more information or to schedule an audition, contact Stacy Rodgers, head of keyboard studies:  
662-915-7027  
srodgers@olemiss.edu  
www.olemiss.edu/depts/music

The Department of Music is a fully accredited institutional member of the National Association of Schools of Music (NASM)

  
The University of Mississippi.  
experience **amazing**



Barbara Tracy

## President-Elect's Message

Conference plans for our 2011 MMTA Conference at Jones County Junior College on November 4-5, 2011, are moving ahead. We hope to increase participation and also offer presentations, workshops, and concerts that increase our knowledge and understanding and also inspire us. We were fortunate to receive a \$3200. Grant from the Mississippi Arts Commission. We are most grateful for their support of our efforts for increasing the musical arts in Mississippi. Please thank your state and federal legislators.

We used video clips of last year's concerto competition in our grant request and received a positive MAC board feedback on seeing the teachers playing with the students. We hope to encourage more student participation this fall by offering two student recitals.

The Friday afternoon student recital will include students from the Hattiesburg/Jones County area. A Saturday morning recital will include students from the Jackson area. After each of these recitals, we will offer a presentation geared to both students and teachers. This year's presentations will focus on Improvisation and Performance Psychology. We hope to include students from other parts of the state in future conference recitals, and students from any part of the state are always welcome to attend conference events.

Our commissioned composition is a brass quintet composed by Dr. James Sobaskie from MSU. The MSU Brass Quintet will premiere this commissioned composition. Our concert artist will be US Navy Band New Orleans. They will be concentrating on New Orleans style music, and this should be a draw for community and student attendance and also give our members some toe-tapping refreshment. Planned workshops and presentations include Piano Maintenance and Dyslexia and the Music Student. Our nationally known guest clinician, Helen Marlais, will be presenting a session on her new piano method, Succeeding at the Piano, and will also be offering a pedagogy workshop and a master class. Our IMTF Luncheon will feature Pamela Pike from LSU with the topic of Sight Reading for all Instruments. Mississippi Music will have a music display during the conference.

We want to include our college students who are working in the area of pedagogy and will offer a poster session for their participation. Please interact with these students since they represent the future music teachers. Our new faculty members over the past couple years will be featured in a New Faculty Recital.

Putting this conference together and making it happen will involve so many people, and I say thank you in advance. We especially want to thank the conference committee and our hosts, Theresa Sanchez, Victoria Johnson, and Kay Guiles. Success depends on your support and attendance. If you live close to Ellisville, encourage public attendance for the Friday evening concert. If you have students that might be interested in attending, please encourage them to come. Don't forget to support the MTNA competitions and our Concerto competition. Give yourself some refresh time and time to network with your colleagues. I also hear that the JCJC food is excellent. Please note that there will not be any Thursday evening conference activities this year. See you in Ellisville on November 4-5!

Barbara Tracy

President-elect

## Treasurer's Report



Michael Rushing

Few transactions have been made over the summer. Membership dues have begun to be received. The first portion of the MAC grant has been received by the President-Elect, and will be deposited for use during the November and March conferences.

The MMTA has made two recent charitable contributions. The first was to the Alabama Music Teachers Association in the wake of the tornados that devastated parts of Alabama in April. This money was drawn from the general operating expenses of the MMTA. A contribution was also made to the Luca Ciraldo Tribute fund at St. Jude Children's Hospital. Luca is the son of Guitar Performance Area Chair Nicholas Ciraldo. This money was spontaneously raised by members of the board at the August meeting.

Anyone wishing to contribute additionally to this fund can do a web search for "Luca Ciraldo St. Jude" to be directed to the Ciraldo Tribute page at St. Jude.

Checking account	\$10,263.61
CD1	\$11,577.85
CD2	\$6,690.69

Cash on hand	\$28,532.15
--------------	-------------

Michael Rushing, Treasurer



## Vice President for Membership and Web Management



Janine Beasley

As of August 18, 2011, 135 members are listed for the 2011-2012 year. Since June 1, there are two new collegiate members and 2 new regular members.

Website changes:

Updated various officer and member information as requested.

Updated calendar for 2011-2012.

Updated conference page with location and date of 2011 conference.

Made a correction on the collegiate competition page to display the amount of \$40 if a second event is entered on the form.

Updated the document for MMTA Guidelines per request by Jacquelyn Thornell.

Added a link for the 2011 MMTA Composition Competition to the Resources page and sent an email to membership.

Updated the winner information on the Student Activities page to include 2011 winner information.

Updated the website for newsletters as requested.

Membership dues received from MTNA: April - 15 @ \$35 and 16 @ \$26.25; May - 24 @ \$35 and 7 @ \$26.25; June - 30 @ \$35 and 12 @ \$26.25, 1 new collegiate member; July - 14 @ \$35 and 3 @ \$26.25, 1 renewing student, 1 new collegiate member.

Ten members have renewed since 7/31/2011; one student member is listed on current membership but not in reports.

Ongoing: working to get email information for members as current as possible, especially email addresses; other miscellaneous updates as needed.

Respectfully submitted,

Janine Beasley

### Jones County Junior College Music Department

900 S. Court St.  
Ellisville, Mississippi 39437  
(601) 477-4094

**Susan A. Smith, Chair**

Sammy Barr, **Band**

Mike Boyd, **Guitar**

Jeff Brown, **Percussion**

Kay Guiles, **Piano/Organ**

Nikki Johnson, **Theater/Voice**

Victoria Johnson, **Piano**

**Matthew Pickering, Low Brass/Band**

[www.jjc.edu/programs/finearts](http://www.jjc.edu/programs/finearts)

Meri Newell, Woodwinds

Patrick Richards, High Brass

Theresa Sanchez, Piano

Susan A. Smith, Voice/Theory

Mark Taylor, Choir

Gregory Wascoe, Voice

## Gulf Coast Music Teachers Association



Founded 1972

## Vice President for Pre-College Performances

Thank you, Jones County Junior College, for hosting the MMTA Conference on November 3-5, 2011. The Pre-College Concerto Competitions will take place on Saturday, November 5 during the Conference. This competition is open to all instruments. Entrants must perform one movement of a standard concerto from memory. Students must provide their own accompanist, but teachers may accompany their own students. This is a wonderful and rare opportunity for students to perform a movement of a significant ensemble work, so begin preparing your students to participate and please encourage your fellow teachers to enter their students, as well.



Alice Ballard

You will find the Pre-College Concerto application and other information under the Student Activities section on our MMTA website. The deadline for submission of application forms and fees is October 1, 2011.

Next year, the MMTA Pre-College Finals will take place Saturday, May 5 on the University of Mississippi campus in Oxford. On behalf of all MMTA members and pre-college participants, I would like to extend appreciation to Dr. Ian Hominick and the faculty and staff at Ole Miss for agreeing to host the Finals.

Respectfully submitted,

Alice Ballard



## Vice-President for Collegiate and National Competitions



Ellen Price Elder

Dear MMTA Membership,

The application deadline for the MTNA competitions is fast approaching – 12 midnight on September 13, 2011. I would encourage you to enter your pre-college and college students in these events. This year we have an added benefit – the Southern Division Competitions will be held at Mississippi College in Clinton!

Please be aware of the following changes in the 2011–2012 MTNA Student Competitions:

1. The ages for Senior Piano Duet have been extended, as MTNA will now allow students age 11–18, as of January 1, 2012, with at least one student age 15–18.
2. The Chamber Music Competition will now feature two tracks – string and wind. The track will be determined by the majority of instruments that comprise each ensemble. Piano will count as a stringed instrument.

All of the submission details can be found on the MTNA website ([www.mtna.org](http://www.mtna.org)).

These are wonderful opportunities for our students to perform and compete. Please encourage your institutional colleagues who are members of MMTA to enter their students in these events as well.

Please let me know if I can be of any help to answer any questions along the way.

Sincerely,

Ellen Price Elder

Ellen Price Elder, D.M.A.

Vice-President for Collegiate and National Competitions

[ellen@ellenelder.com](mailto:ellen@ellenelder.com)

(601) 467-9745

---

## Mississippi State University – Piano Area News

### Piano Retreat

Mississippi State University is offering on January 27 and 28 a Piano Retreat. A day for young pianists entering Grades 7-12, who have studied piano for at least two years. The day will include concerts, classroom instruction, a creative class and piano lessons, when students will experience college life in a major university campus.

The Piano Retreat will start on Friday, January 27 at 6:30 pm with a concert featuring students and MSU faculty. On Saturday, January 28, students will experience harpsichord lesson, piano literature, collaborative piano, a creative class as well as private lessons with MSU faculty.

Applicants are required to have at least two contrasting works from different periods. Choose one movement of multi-movement works such as sonatas, suites, partitas, etc...

Students will be required to have their private teacher signature on the form, and private teachers are welcome to participate in all events free of charge.

Tuition is \$35.00 by January 13<sup>th</sup>. After January 14<sup>th</sup> the tuition is \$45.00. Refunds are not available due to cancellation or no-show, and if the MSU Piano Retreat is canceled, all fees will be fully refunded. For more information about this event visit:

[http://www.music.msstate.edu/pdf/areas/piano/1st\\_annual\\_piano\\_retreat.pdf](http://www.music.msstate.edu/pdf/areas/piano/1st_annual_piano_retreat.pdf)

### Pre-College Piano Program

Mississippi State University is proud to offer a pre-college piano program where instructors will be supervised by the MSU piano faculty. Our mission is to provide high quality, non-credit piano lessons to the Starkville community.

Instructors will give 12 hour-lessons per semester, starting the first full week of September, after Labor Day. Students will be required to take a one hour lesson or two half-hour lessons per week for the price of \$20.00 per week. For beginner pianists it is recommended two half hour lessons per week, for intermediate and advanced pianists it is recommended a one hour lessons per week. Tuition must be paid in full at registration before the first lesson. Check must be payable to the instructor. There will be a \$10.00 registration fee for expenses related to administration and semester recital, a total of \$250.00 per semester.

An interview with prospective students and parents/guardians will be scheduled to assess student interest, background and aptitude, and to allow students and teachers to meet. The program will follow the MMTA (Mississippi Music Teachers Association) requirements, a division of MTNA (Music Teachers National Association). For more information about activities and curriculum look under Pre-College Piano at:

<http://www.msmusicteachers.org/competitions-precollege-auditions.php>

All applications should be mailed to: Dr. Rosângela Sebba, P.O. Box 6240, Department of Music, Mississippi State – MS 39762.or fax to: (662) 325-0250

---

## Call for Submissions

Dear MTNA Member:

I think we need a chicken-soup-for-the-soul-like book for music teachers!

During my years of memberships in MTNA, I have heard many wonderful personal stories that have inspired me to create a collection of stories from music teachers, especially those with private studios.

Most of us have a wealth of memories of weird/touching/funny things that have been said to us as well as of unique experiences we have had during our teaching careers. You may even recall your own least professional, funny, or embarrassing moment as a teacher (I have a humdinger!).

I plan to publish the best of these stories and hope that everyone reading this will be willing to share one or more special stories; anywhere from one sentence to a few pages would be fine.

Here are some types of stories to consider:

- Funny things said by students, parents, family, or acquaintances
- Embarrassing, funny, or special things you did as a teacher
- Sad, touching, rewarding, funny stories from teaching
- Ironic or unbelievable event
- Stories about some stereotype others have of the independent music teacher
- Any story you think other teachers would enjoy hearing

Please send your stories to:

[beth.klingenstein@vcsu.edu](mailto:beth.klingenstein@vcsu.edu)

OR

Beth Gigante Klingenstein

341 3<sup>rd</sup> Avenue NW

Valley City, ND 58072

No real names of students, parents, or others will be used in the stories. If I may use your name, please send your name, contact information, and state along with the story. If you wish to remain anonymous, please indicate your state only.

I look forward to hearing from you. I am excited to share the stories I already have; I can't wait to hear yours!

Beth Gigante Klingenstein, NCTM

Author of *The Independent Piano Teacher's Studio Handbook* and *A Business Guide for the Music Teacher*

---

## Affiliate News

HATTIESBURG MUSIC TEACHERS LEAGUE (HMTL) is preparing for an exciting calendar of events this academic year! Our first general meeting of the year, scheduled for Saturday, September 10, 2011, will break a little bit from the norm. HMTL is getting a new website! So, our program will be presented by Keith Elder, a Director of Software Engineering at Quicken Loans, Inc. and owner of Zorka.com, a website hosting company. Keith will introduce the new HMTL website and answer any questions that members might have about its use. The September 10 meeting will be held at the University of Southern Mississippi.

On November 18-19, 2011, the league will hold its biennial composer festival. This year's featured composer is Dennis Alexander. He has earned an international reputation as one of North America's most prolific and popular composers of educational piano music for students of all levels. Mr. Alexander will present a teacher workshop at Wolfe Gang Music Company on November 18. He was commissioned by the league to write a suite commemorating the festival entitled Vignettes of Hattiesburg. Students of league members will perform for Mr. Alexander in a series of recitals on November 18 and 19 at Mississippi Music, Inc. The public is invited to attend all of these events. A special thank you to Dr. Victoria Johnson, Composer Festival Chair, who has worked very hard in preparation for this year's festival.

We are also looking forward to our January general meeting and program featuring Dr. Theresa Sanchez who will present a lecture recital on the music of Amy Beach. This will take place on Saturday, January 21 in Marsh Auditorium at USM. This meeting will also serve as our NFMC workday.

Three HMTL student recitals are planned for this year: October 29 (USM Marsh Auditorium), February 11, and April 21 (Mississippi Music Recital Hall). Our annual Spring Concert for students in grades 9-12 will be held on April 29 at William Carey University. We appreciate the diligent work of Gail Fox, Recitals Chair, and Susan Fairchild, Spring Concert Chair.

Even during the summer months, our teachers are already making preparations to enter their students in local area festivals and competitions. The District III MFMC festival will take place on Saturday, February 18, 2012, at William Carey University, with Janice Mesrobian serving as chair. The MMTA Pre-College District Evaluations for the Hattiesburg district will be held on March 31 at William Carey University. Dixie Lawson will serve as chair of this event.

HMTL will also hold its annual scholarship auditions on April 30 for students who are interested in attending local and state summer music camps. The auditions will be held at Mississippi Music, Inc., with Lois Leventhal serving as chair.

Our May business meeting and luncheon will take place on May 17 at the Purple Parrot Café.

We are looking forward to all of the wonderful opportunities that this year promises!

Sincerely,

Ellen Price Elder

Ellen Price Elder, DMA

## MUSIC FORUM OF JACKSON

By Greta-Barbour Mills, president

Back in the spring, we, at the Music Forum of Jackson, completed our 43<sup>rd</sup> year of continuous efforts of promoting professional fraternity among area music teachers and stimulating musical growth.

We had the privilege of Judith Fairchild, of Memphis, TN, joining us as our guest clinician for last year. She gave two outstanding lectures: the fall lecture focused on "Teaching Artistry by Discovering Personality Types," and the lecture in the spring looked into the life and works of Robert Schumann.

Last November, MFOJ co-hosted our annual Sonata/Sonatina Festival with Millsaps College. In December, with the help in Mississippi Music, Inc. we had over 100 students participate in our annual Pianthon held at Northpark Mall. 469 students came from all over the state to participate in February as we hosted the forty-second Bach Festival at Hinds Community College. And we were back at Hinds Community College again in April, as we hosted MMTA Jackson Area Pre-College Evaluations. Of the 95 entrants, over half preceded to the Mississippi Music Teachers Pre-College Finals.

We were honored to have the Mississippi Symphony Orchestra contact us and offer our members and piano students a discount for the MSO Bravo IV spring performance, with internationally renowned guest pianist Alexander Ghindin.

We hope to continue our efforts to support musical growth and the objectives of the Mississippi Music Teachers Association in the new school year.



JONES COUNTY MUSIC TEACHERS  
ASSOCIATION

Janine Beasley, President

A meeting was held on July 24, 2011 for business, nominating and electing officers, and to determine music for 2012 Solo and Sonata Competition and 2012 Ensemble Festival. Dates for events were also determined at the meeting. Our next meeting will be held on August 27, 2011.

The JCMTA annual Showcase Recital will be held on November 13, 2011. Student performers and composers will be highlighted at this event.

The JCMTA annual Solo and Sonata Competition will be held on January 21, 2012. The competition is for students sixth through twelfth grade.

The JCMTA annual Ensemble Festival will be held on February 25, 2012.

Business meetings will be held prior to the above events.

Jones County Music Teachers Association will participate in the Ellisville area MMTA Evaluations on April 14, 2012, at Jones County Junior College.

Respectfully submitted,

Janine Beasley



## Gulf Coast Music Teachers Association

Affiliated with Mississippi Music Teachers Association  
and Music Teachers National Association, Est. 1972

GCMTA elected officers for 2011-2012 at a called meeting on August 6, 2011.

President -	Yvonne Young-McGrath
Vice President -	Rebekah Lipscomb
Treasurer -	Marilyn Leone
Secretary -	Dr. Joanna Burnside

Appointed officers are:

Historian, Certification Chair -	Dr. Joanna Burnside
Publicity Chair -	Elsie Barnes
Music Festival Chair -	Marilyn Leone
Pre-college Chair -	Carol Mahler

Carol Schutzmann will be mentoring Rebekah during her first year holding an office. Martha Mayeu will assist Joanna with written correspondence as required for Secretarial responsibilities; and a new member, Mandy Long, is in training to assume Festival Chair in the future.

Gulf Coast MTA has initiated a website (primarily for members) and a Facebook page during the past season. Our intent is that the Facebook (by invitation) will provide member teachers and their students an opportunity to relate in a popular, casual manner. The website, [gcmusicteachers.com](http://gcmusicteachers.com), is provided for Gulf Coast affiliate members to keep abreast of meetings, activities, and news related to our own association. These sites also appear when interested persons web-search area teachers. Our on-line opportunities have been designed and are being maintained by members Dr. Joanna Burnside and Rita Caviness. The website now has a "members only" link. Joanna also plans to start digitizing our history. This project will reduce a lot of paperwork currently being carried home-to-home. It will also be a wonderful source for current

Speaking of Joanna and Rita, I must express a STRONG personal note of thanks. The past several years' officers (myself, Carol Schutzmann, Marilyn Leone, Carol Mahler, Peggy Peterson, et. al.), had been feeling almost resigned to failure. But Joanna joined us; as you all know, she has incredible talent, credentials and background. When the Coast seemed nearly gone, she came with enthusiasm and inspiration. Rita is very new but has great experience and jumped into MMTA with momentum, immediately accepting position of VP Pre-college Evaluations. I had to bribe her, of course, but it's been worth it. Efforts by these music professionals have given GCMTA renewed vigor.

Our association presented a combined Christmas recital in December that included over 20 students. We appreciated positive response from not only the general audience, but performers, parents, and teachers. The annual Gulf Coast Music Festival, our fund-raiser, heard 91 young musicians.

GCMTA was not able to enlist enough working members to center local Pre-college Evaluations; but we did enter students in conjunction with Hattiesburg Music Teachers League. Our thanks go to that affiliate for allowing us to join them. Students from the Coast proved themselves in piano and voice; many qualified for and participated in MMTA State Finals.

Our annual Senior Music Award (by audition) was held April 30. Sarah Ramsay, vocalist and pianist, won First Place. Sarah has studied piano since age 6 and has taken private voice more than 4 years. She plans to incorporate music into her college studies in elementary education along with expanding her performance credentials through stage and church opportunities.

It is really exciting to see some new names on our officer & membership lists! Our June recruitment drive and luncheon are getting results. Though we've not been able to confirm through MTNA yet, it appears we'll have 6 new members this year. One incentive we offered is to pay half the first year's membership fees for those who join by September 30.

With this renewed energy and "fresh blood", Gulf Coast will conduct our own Pre-college center again in March 2012. We are planning at least 2 regular meetings to include informative programs and have also set dates for the following events:

Christmas recital (combined studios) December 3, 2011 (possibly 10<sup>th</sup> per venue availability)

Gulf Coast Music Festival                      February 25, 2012.

Respectfully submitted,

Yvonne Young-McGrath, B.M.

Lyric Mezzo-soprano

Pres., Gulf Coast Music Teachers Assoc.

The Vicksburg Music Teachers look forward to another busy year of lessons and recitals, with 10 members. We are pleased to have our first ad ever in this issue of the MMT! Our first group recital is for the Boys – with a Halloween theme, and costumes are encouraged. We plan a Beginners recital, and a 'Beach Party' recital just before spring break. We also hope to offer another event with Natchez Music Festival director, Jonathan Levin, in late spring. Please see our Facebook page, and click on 'like' to let us know you were there, at Facebook.com, and go to Vicksburg Music Teachers Association.

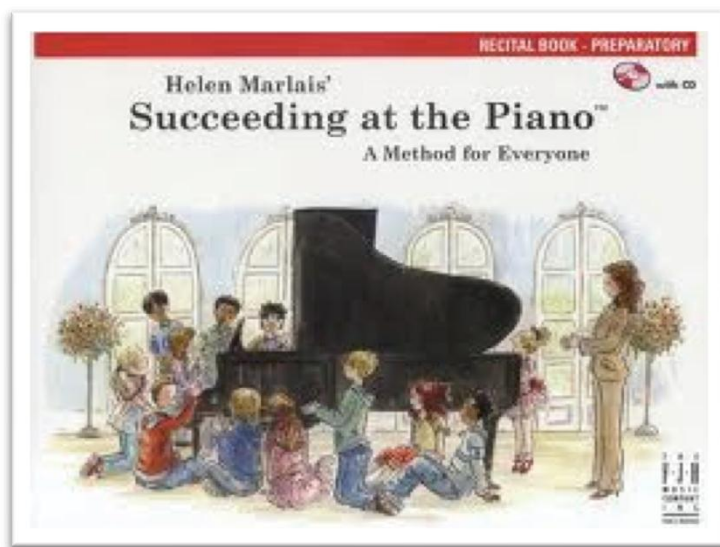
Respectfully submitted,

Jeanne Evans, President

## 2011 Conference

November 4 – 5

Jones County Junior College, Ellisville



Helen Marlais is our guest clinician and will present pedagogical sessions and lead a master class.

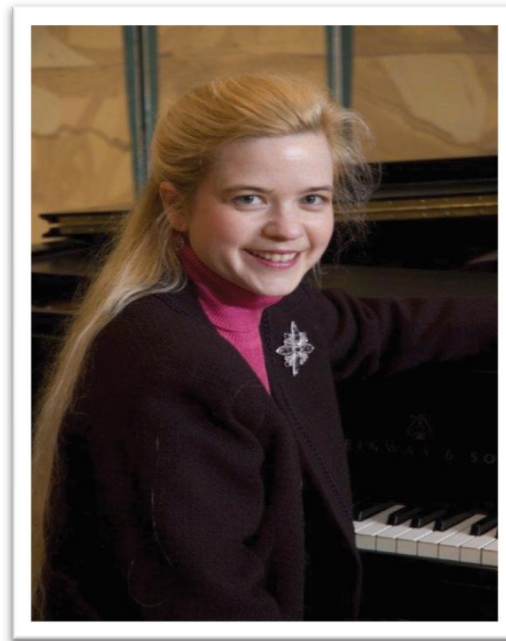


James Sobaskie is our commissioned composer. His brass quintet will be premiered by the MSU Brass Quintet during the conference.

Our concert artist is the Brass Band from the U.S. Navy Band in New Orleans.



Our IMTF speaker, Pamela Pike, will be presenting on sight reading.





Jackie Edwards-Henry will give a presentation on improvisation and Alice Ballard will give a presentation on performance psychology to pre-college students in attendance.

Pamela Jones will give a presentation on dyslexia and the music student.

Lonnie Young, piano technician, will also give a presentation at the conference.

---

Draft Schedule for 2011 MMTA Conference Nov. 4-5, 2011, at JCJC

Friday: Conference Registration 8:00AM; MTNA Competition Registration

8:15AM MMTA Board meeting – Fine Arts Auditorium

9:00 Presentation - Lonnie Young, piano technician (Rm. 145); MTNA Competitions begin

10:00 Helen Marlais Composer Showcase – Rm. 145

11:30 Past Presidents' Luncheon – Life Science Building

11:30 Pre-College district chairs/Teachers Luncheon - cafeteria

12:30-1:30 College student pedagogy posters – FA Lobby

1:00: Helen Marlais Pedagogy Presentation – Rm. 145

2:00 New Faculty Recital – Foote Chapel

3:00 Presentation - Pamela Jones - Dyslexia and the music student – Rm. 145

4:15 Student recital (Jones/Hattiesburg students)--Foote Chapel/Certification session – Rm. 145

5:00 Member presentation for pre-college student audience -Foote Chapel, Jackie Edwards-Henry: Improvisation

5:45 Banquet -Neill Student Center, faculty dining room

7:00 Concert- Navy Band New Orleans and Commissioned Composition with MSU Brass Quintet – Fine Arts Aud.

8:30 Reception hosted by Jones County and Hattiesburg affiliates – Fine Arts lobby

Saturday: Conference Registration 8:00 AM – Fine Arts lobby

8:15 MMTA General Business Meeting – Foote Chapel

9:00 Helen Marlais Intermediate Masterclass – Foote Chapel

10:00 Student recital (Jackson Forum students) – Foote Chapel

10:30 Member presentation for pre-college student audience–Alice Ballard - Performance Psychology – Foote Chapel

11:30 IMTF Luncheon- Pamela Pike - Sightreading (for all instruments) – Fine Arts Rm. 145

1:00PM Registration for Concerto Competition – Fine Arts lobby

1:30 Concerto Competition: Piano – Fine Arts Auditorium; Strings – Foote Chapel

3PM Masterclass with Pamela Pike – Foote Chapel

## Hotel Information

Five minutes from JCJC campus:

Best Western Ellisville Inn  
1102 HWY 29N  
Ellisville 39437-2096  
601-477-8082  
800-780-7234  
MMTA State Convention discount: King - \$67.99 + tax  
Double 71.99 + tax  
Complimentary continental breakfast

Fifteen minutes from JCJC campus:

Hampton Inn  
1509 Jefferson Street  
Laurel, Mississippi 39440  
1-601-399-0659  
\$99 plus tax - request rate for Mississippi Music Teachers Association  
Complimentary breakfast area

Thirty minutes from JCJC campus:

Candlewood Suites  
9 GATEWAY DRIVE  
HATTIESBURG, MS 39402  
Hotel Front Desk: 1-601-264-9666  
Studio King or 2 doubles \$87.99 - request rate for Mississippi Music Teachers Association  
[deadline is Oct. 3 for the special rate]  
No breakfast served; rooms have kitchenettes



Please mail your Conference registration, Banquet and IMTF Luncheon fees along with this form by **OCTOBER 25** to:

Barbara Tracy  
617 Holly Ridge Drive  
Vicksburg, MS 39180

The Conference advance registration fee includes the Conference Program as well as admission to all workshops, lectures and concerts during the 2011 Conference. Your materials and name tag will be available at the Conference registration desk. Registration fee for MMTA members and non-members is \$20. College and Pre-college students may attend at no cost.

Please note that the Guest Artist Concert on Friday evening (Brass Band from Navy Band New Orleans) is open to the public with no admission charge.

Our annual conference presents opportunities for professional development, networking and assistance in MTNA certification. We will offer a certificate of attendance for any student or teacher requiring documentation.

Registration fees will also be accepted at the Conference registration desk. Friday evening Banquet fees and the Saturday IMTF Luncheon fees **MUST BE PAID IN ADVANCE** to ensure a spot for you!

I am enclosing payment for the following (please check):

- MMTA MEMBER OR Non-Member REGISTRATION FEE - \$20  
 College or Pre-college student REGISTRATION - free  
 BANQUET FEE - \$15.00 (meat and vegetarian entrees available on buffet)  
 IMTF LUNCHEON FEE - \$10.00  
 \$ \_\_\_\_\_ TOTAL ENCLOSED (make checks payable to MMTA)

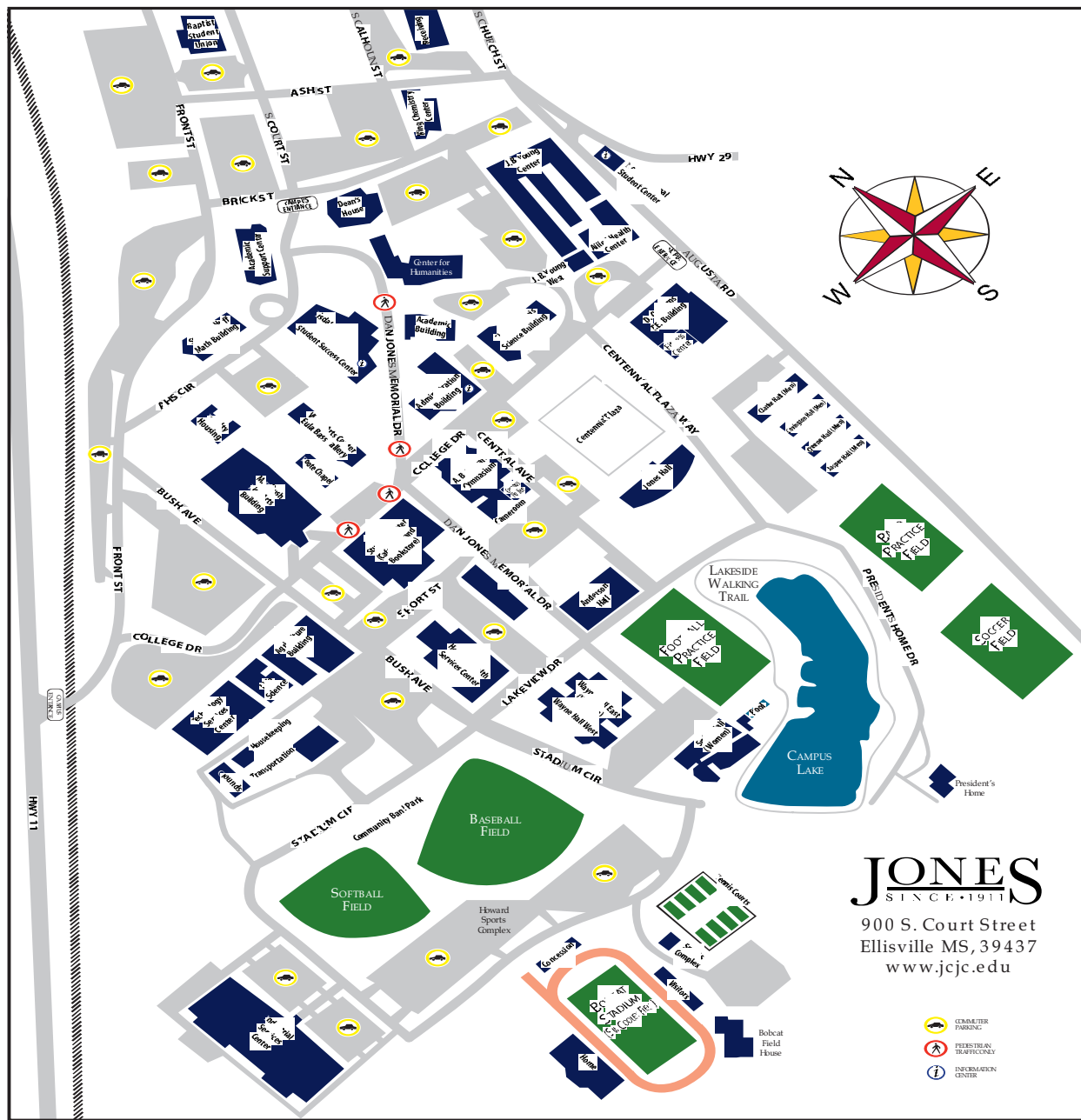
Information for Conference name tag:

NAME: \_\_\_\_\_

MMTA LOCAL AFFILIATE: \_\_\_\_\_

I would like a Certificate of Conference Attendance \_\_\_\_ YES \_\_\_\_ NO

I would like to have MTNA/MMTA membership information \_\_\_\_\_



## Directions from Jackson

Take Hwy 49S to Collins, and take the 84E exit there. Go about 20 mi. and turn right onto Hwy. 29 for about 6 miles. Take a left at stop sign by Ellisville Best Western motel and cross over I59. The road becomes Hill St. Turn right at the first traffic light onto Hwy 11S and go to the JCJC sign. Get in the left turn lane and go over the railroad tracks. The M.P. Bush Fine Arts Building will be straight ahead.

## Mark Your Calendar

November 3-5, 2011 – MMTA State Conference, Jones County Junior College, Ellisville

November 4, 2011 - MTNA Collegiate and Pre-College Solo Competitions, Jones County Junior College, Ellisville

November 5, 2011 - MMTA Pre-College Concerto Competition, Jones County Junior College, Ellisville

November 19, 2011 -- Sonata-Sonatina Festival, Millsaps College

January 13 – 16, 2012 - MTNA Southern Division College and Pre-College Competitions, Mississippi College, Clinton

February 4, 2012 -- Bach Festival, Hinds Community College

March 3, 2012 - MMTA Collegiate Competition, Jones County Junior College, Ellisville

March 4, 2012 - Alcorn State Piano Competition, Natchez, MS  
www.alcornstatepiano.competition.com  
Contact Dr. Julia Mortyakova at [mortyakova@gmail.com](mailto:mortyakova@gmail.com)

March 31, 2012 - MMTA Pre-College Evaluations, Group A: Jackson, Meridian, Tupelo, Hattiesburg, Gulf Coast, and Goodman

April 14, 2012 - MMTA Pre-College Evaluations, Group B: Ellisville, Columbus, Oxford, Starkville, Vicksburg, Wesson

April 21, 2012 -- MVSU Piano Festival, Itta Bena, MS

May 5, 2012 -- MMTA Pre-College Finals, The University of Mississippi, Oxford

Do you have an event you would like to be placed in the Mississippi Music Teacher? Contact Stephanie Holmes at [seholmes2@hotmail.com](mailto:seholmes2@hotmail.com).

## *Mississippi Music Teachers Association*

Est. 1954

*The purpose and goals of the Mississippi Music Teachers Association are to further the art of music, and promote the growth and professional development of its members by providing programs that encourage and support teaching, performance, composition and research. MMTA is a not-for-profit organization whose funds are used solely to accomplish these objectives.*

Mississippi Music Teacher is published online three times per year. Address all communications, articles, and pictures to the Editor. The MMT is available to the public on the MMTA website in PDF format.

ADVERTISING: Limited advertising space is available for firms or individuals who have a product or service of specific interest or benefit to MMTA members. All correspondence regarding advertising should be sent to the VP for Public Relations.

### YEARLY ADVERTISING RATES (size in inches)

2 ¼ x 1	\$70	2 ¼ x 2 ¼	\$120
2 ¼ x 4 5/8	\$170	2 ¼ x 7	\$240
4 5/8 x 4 5/8	\$275	4 5/8 x 7 (half page) \$500	
7 x 9 ¼ (full page)		\$900	

Conference printed edition ads can be purchased for that one edition for 1/3 of the above prices.

---

## MMTA Officers

### President

Ian Hominick  
432 Cherokee Drive  
Oxford, MS 38655  
Phone: 662-513-4994  
Work: 662-915-1282  
[ihominic@olemiss.edu](mailto:ihominic@olemiss.edu)

### President Elect

Barbara Tracy  
617 Holly Ridge Drive  
Vicksburg, MS 39180  
Phone: 601-638-3453  
[tracy@vicksburg.com](mailto:tracy@vicksburg.com)

### Immediate Past President

Rachel Heard  
3821 Montrose Circle  
Jackson, MS 39216  
Phone: 601-987-8414  
[heardr@millsaps.edu](mailto:heardr@millsaps.edu)

### VP for Membership & Web Management

Janine Beasley  
3122 N 5th Ave.  
Laurel, MS 39440  
Phone: 601-649-9240  
[music@beasinc.com](mailto:music@beasinc.com)

### VP for Collegiate & National Competitions

Ellen Price Elder  
William Carey University  
498 Tuscan Ave.; Box 14  
Hattiesburg, MS 39401  
Phone: 601-467-9745  
Work: 601-318-6179  
[ellen@ellenelder.com](mailto:ellen@ellenelder.com)

### VP for Pre-College Performances

Alice Ballard  
Hinds Community College  
P.O. Box 1100  
Raymond, MS 39154  
Phone: 769-226-7038  
Work: 601-857-3528  
[Alice.Ballard@hindsc.edu](mailto:Alice.Ballard@hindsc.edu)

### VP for Pre-College Evaluations

Rita Caviness  
11235 Cypress Bayou Dr  
Gulfport, MS 39503  
Phone: 228-669-1539  
[capriccio1@gmail.com](mailto:capriccio1@gmail.com)

### VP for Public Relations (Newsletter Editor)

Stephanie Holmes  
226 Hillcrest Dr  
Kosciusko, MS 39090  
Phone: 662-417-1390  
Work: 662-289-3575  
[seholmes2@hotmail.com](mailto:seholmes2@hotmail.com)

### Secretary

Yvonne Young-McGrath  
753 Canterbury Dr  
Biloxi, MS 39532-4303  
Phone: 228-617-9127  
[mcmomx4@hotmail.com](mailto:mcmomx4@hotmail.com)

### Treasurer

Michael Rushing  
1034 RN Whitfield St.  
Florence, MS 39073  
Phone: 601-573-1068  
[mrushing@mc.edu](mailto:mrushing@mc.edu)

### Appointed Officers

#### Chair of Theory & Composition

Benjamin Williams  
1221 Cliffdale Dr  
Clinton, MS 39056  
Phone: 601-925-7739  
[benwilliams@mc.edu](mailto:benwilliams@mc.edu)

#### Chair of Independent Music Teachers Forum

Rosangela Yazbec Sebba  
P.O. Box 6240  
Mississippi State, MS 39762  
Phone: 662-325-2854  
[rys3@colled.msstate.edu](mailto:rys3@colled.msstate.edu)

## Chair of College Faculty Forum

Angela Willoughby  
100 Murial St  
Clinton, MS 39056  
Phone: 601-906-8040  
[willough@mc.edu](mailto:willough@mc.edu)

## Chair of Certification

Position not filled

Assistant to the VP for Public Relations

Position not filled

## Webmaster

Handmade Designs  
Toll Free 1-877-467-2660  
[www.handmadedesigns.com](http://www.handmadedesigns.com)

Performance Area Chairs

## Brass

Douglas Mark  
Delta State University  
Department of Music  
PO Box 3256  
Cleveland, MS 38733  
Phone: 662-846-4607  
[dmark@deltastate.edu](mailto:dmark@deltastate.edu)

## Chamber Music/Jazz

Jung-Won Shin  
Delta State University  
Department of Music  
PO Box 3256  
Cleveland, MS 38733  
Phone: 662-846-4123  
[jshin@deltastate.edu](mailto:jshin@deltastate.edu)

## Guitar

Nicholas Ciraldo, DMA  
University of Southern Mississippi  
118 College Drive #5081  
Hattiesburg, MS 39406  
Office: 601-266-5401  
[nicholas.ciraldo@usm.edu](mailto:nicholas.ciraldo@usm.edu)

## Piano

Karen Fosheim  
PO Box 3256  
Cleveland, MS 38733  
Phone: 662-846-4622  
[kfosheim@deltastate.edu](mailto:kfosheim@deltastate.edu)

## Strings

Alexander Russakovsky  
University of Southern Mississippi  
School of Music  
118 College Drive, # 5081  
Hattiesburg, MS 39406  
Phone: 601-266 6851  
[arussakovsky@hotmail.com](mailto:arussakovsky@hotmail.com)

## Voice

Phyllis Lewis-Hale  
Jackson State University  
Department of Music  
P.O. Box 17055  
Jackson, MS 39217  
Phone: 601-979-2984  
[phyllis.lewis-hale@jsums.edu](mailto:phyllis.lewis-hale@jsums.edu)

## Woodwinds

Shelley Collins  
Delta State University  
Department of Music  
PO Box 3256  
Cleveland, MS 38733  
Phone: 662-846-4617  
[scollins@deltastate.edu](mailto:scollins@deltastate.edu)

## Collaborative Arts

Theresa Sanchez, NCTM  
907 N 34th Ave  
Hattiesburg, MS 39401  
Phone: 601-271-8700  
[theresa.sanchez@jcc.edu](mailto:theresa.sanchez@jcc.edu)

Local Affiliates

## Golden Triangle Music Forum

Ricki Prewitt  
11 Lakes Boulevard  
Starkville, MS 39759  
Phone: 662-324-9393  
Cell: 662-312-3136

## Gulf Coast MTA

Yvonne Young-McGrath  
753 Canterbury Dr  
Biloxi, MS 39532-4303  
Phone: 228-617-9127  
[mcmomx4@hotmail.com](mailto:mcmomx4@hotmail.com)

## Hattiesburg Music Teachers League

Ellen Price Elder  
William Carey University  
498 Tuscan Ave.; Box 14  
Hattiesburg, MS 39401  
Phone: 601-467-9745  
Work: 601-318-6179  
[ellen@ellenelder.com](mailto:ellen@ellenelder.com)

## Jones County MTA

Janine Beasley  
3122 N 5th Ave.  
Laurel, MS 39440  
Phone: 601-649-9240  
[music@beasinc.com](mailto:music@beasinc.com)

## League of Meridian Music Teachers

June Williams  
100 38th St.  
Meridian, MS 39301  
Phone: 601-482-4107

## Music Forum of Jackson

Greta Barbour Mills  
817 Arlington St  
Jackson, MS 39202-1619  
Phone: 601-353-5305  
[gretabarbourmills@att.net](mailto:gretabarbourmills@att.net)

## Music Forum of Tupelo

Peggy Oakes  
2012 Strain St.  
Tupelo, MS 38804  
[oakesp@bellsouth.net](mailto:oakesp@bellsouth.net)

## Vicksburg MTA

Jeanne Evans  
3140 Drummond St  
Vicksburg, MS 39180-4912  
Phone: 601-634-0826  
[aievens88@bellsouth.net](mailto:aievens88@bellsouth.net)

---

## From the MMT Editor

These days, it seems all I do is plan.

Plan activities for my piano lab...plan lessons for my private studio...plan for the September 11 concert my church choir recently performed in.... I've had enough planning to last me for the next month until I have to start planning for church Christmas programs! 😊

Barbara Tracy, Theresa Sanchez, Victoria Johnson, and Kay Guiles have been hard at work planning for our 2011 Conference at Jones County Junior College in Ellisville. Talk about something that could very well be a logistical nightmare! However, they have done a fabulous job planning what will be a wonderful conference.

I hope you all take time to add coming to Ellisville November 4-5 to your many plans this fall. See you at JCJC!

Sincerely,

Stephanie Holmes, editor

seholmes2@hotmail.com

---



Stephanie Holmes

Editor

---

## Mississippi Music Teacher

---

Stephanie Holmes, editor

226 Hillcrest Drive  
Kosciusko, Mississippi 39090



Find us on the web!

<http://msmusicteachers.org>

Membership in Mississippi Music Teachers Association is open to individuals professionally engaged in any field of musical activity. Since MMTA is a state affiliate of Music Teachers National Association, all membership is handled through national headquarters. Please check the MTNA website <http://www.mtna.org/home.htm> or the MMTA VP for Membership for membership information or application forms.