

MISSISSIPPI MUSIC TEACHER

The Official Publication of the Mississippi Music Teachers Association

Affiliated with the Music Teachers National Association

Plan to attend our 2013 Conference November 1-2 at Mississippi University for Women in Columbus

Message from the President

I hope you had a refreshing summer. I also hope you have worked out your fall schedule and are blessed with a group of students who are excited about learning. Remember to program some time to relax. Please put the 2013 MMTA Fall Conference on your schedule and encourage your students to attend the guest artist concert or encourage them to enter one of the MTNA competitions during the conference. Our conference committee chaired by Ellen Elder will be scheduling a full line-up of conference presenters and recitalists on November 1-2 at Mississippi University for Women (MUW) in Columbus. The MTNA student competitions will be held on November 1 during the conference, and these competitions are open to the public. MUW has just completed a renovation of their fine arts facilities, and we look forward to enjoying them. We thank our host, Dr. Julia Mortyakova, for the invitation to MUW.

Our guest artist this year will be pianist Angelin Chang, a Grammy award winner. The Angelin Chang concert (7:30PM on November 1 in Kossen Auditorium) has no admission fee and is open to the public. Please make sure you are able to attend and bring friends. Remember that conference registration is only \$25 for MMTA members or non-members. Students can attend at no cost. We welcome Dr. John Ellis from the University of Michigan as our conference clinician. Ken Davies will be our MS commissioned composer, and Judith Fairchild will be our IMTF speaker. We are also looking forward to several member presentations at the conference. An added "plus" will be presentations for our members who specialize in areas other than piano. Please see Ellen's report in this issue for more details on the conference. Many thanks to Ellen for the MAC grant package that produced \$3800.00 to help defray our Fall Conference and Collegiate Competition expenses. Please thank our MS legislators for their support of arts funding.

FALL 2013 VOL. 29, ISSUE 3

Table of Contents



Officer Reports

1



Affiliate News

10



Fall Conference

15



Upcoming Events

21

Message from the President (continued)

MTNA has established a benevolence fund that makes grants available to teachers who have been impacted by damage from natural disasters like hurricanes or tornadoes. Benevolence guidelines and applications are available on the MTNA website. This benevolence fund began with the funds that were left over after the grants for Hurricane Sandy were processed. The MTNA website also has a link where members can donate funds to help fund these grants. MTNA made this information available to our Hattiesburg members earlier in the summer. We are grateful that we will be able to hold our pre-college finals at USM next May. Our thoughts and prayers are with our USM and Hattiesburg colleagues who are still dealing with repairs and disruptions from the storm.



Barbara Tracy

The MMTA Board voted to change the appendix of the MMTA Bylaws by replacing the old MTNA code of ethics with the new MTNA Code of

Ethics. Our Bylaws now reference the current MTNA code of ethics via a link to the MTNA website. All MS local associations should make sure that their constitutions and bylaws reference the new MTNA code of ethics. Please remember that the Federal Trade Commission (FTC) wants to make sure that MTNA (or any organization under its umbrella) encourages a student to make a free choice about a teacher. They also want to make sure that adherence to the code of ethics is voluntary for MTNA members. Remember that we are a 501c3 organization, and we want to encourage membership for all who share our musical mission. The national MTNA Board is working with their lawyers and the FTC to rectify the situation. Our state and local documents need to be in compliance with the national policy.

MTNA will sponsor a summit meeting for state presidents on September 20-22 in Cincinnati. It is helpful to meet the other state presidents and discuss ideas and programs. We also have presentations to fill us in on the different MTNA programs and have an opportunity to interact with the MTNA staff. Our MMTA website has received many compliments and has stimulated several states to work on setting up a similar website.

I am very thankful to have a wonderful group of people to work with on the MMTA board. We are making an effort to provide quality programs and events to encourage and develop our music students and enhance and inspire our music professionals. Please encourage your colleagues to become part of our organization and support our collegiate, MTNA and pre-college competitions. Younger teachers and musicians may not see a need to become part of a professional organization and may not realize the benefits of being part of MTNA/MMTA. Consider being a mentor and encourage their participation. It will be a positive force for the future of the arts and music in Mississippi. I am looking forward to seeing everyone in November at MUW.

*Ellen Elder*

President-Elect's Message

We were fortunate to receive \$3800.00 from our MAC grant request. Positive comments were received from the grant committee panel. Based on these comments, we will continue to grow upon our strengths, and to evaluate the areas where we can improve.

Our conference committee met this morning to discuss the content and scheduling of events for the 2013 MMTA Conference to be held November 1-2, 2013, at Mississippi University for Women. Dr. Julia Mortyakova will be our conference host and will present a member presentation Friday morning of the conference. We have one new faculty member scheduled to perform on the new faculty recital, which will take place on Friday afternoon. Please help me get the

word out about this recital, and let me know if you have any colleagues who would like to participate. The pre-college gold medal winners recital was a success last year, and we would like to invite the winners from the MMTA pre-college finals competitions to participate again this year. I will be in touch with their teachers in the planning of this event, which will take place on Saturday morning of the conference. Dr. John Ellis will be our conference clinician. Dr. Ellis is *Associate Dean* for Administration, Associate Professor of Piano and Piano Pedagogy, and Director of Community and Preparatory Programs at the University of Michigan. He will give three presentations and a masterclass. The guest artist recital (Friday, Nov. 1, 7:30 p.m.) will feature Grammy award winner, Angelin Chang, pianist. She will also present a masterclass on Saturday morning, featuring winners from the MTNA competitions. This concert will be free and open to the public. Ken Davies is our commissioned composer. He has written a wonderful work for trumpet, trombone, and piano, entitled "Collage" which will be performed by the Me-We Trio (Dr. Jason Bergman, trumpet; Dr. Ben McIlwain, trombone; Dr. Ellen Elder, piano). The IMTF luncheon lecture will be presented by Judith Fairchild, "Thoughts on Teaching Beginners." She will also serve as judge of the pre-college concerto competitions which will be held Saturday afternoon, and will present a masterclass immediately following the piano competitions. We have several member and non-member presentations planned for both days of the conference, including a two-piano concert featuring pianists Lisa Fairchild and Jennifer Lee from Memphis (Saturday morning), a collaborative arts presentation from Dr. Karen Murphy from MSU, a presentation from Valentin Bogdan (new piano faculty member from MUW), and a presentation from our very own Dr. Ian Hominick. Please be sure to attend the MTNA competitions and the pre-college concerto competitions (held Friday morning-afternoon and Saturday afternoon respectively), and to enter your students in these events. Rosangela Sebba and Alice Ballard will be in touch regarding the approaching deadlines for these competitions.

I would like to thank Dr. Julia Mortyakova for her help in preparing for the conference, and the members of the conference committee for their support and assistance with planning. I am excited about our plans for November, but I cannot do it without your help. So please make plans now to attend! I look forward to seeing you there!

Respectfully submitted,

Ellen Price Elder

MMTA President-Elect

Treasurer's Report



Michael Rushing

Balance sheet as of August 17, 2013

Current assets:

Checking: \$15,511.24

CD 1: \$11,621.61

CD 2: \$6,715.98

Total assets: \$33,848.83

Vice President for Membership and Web Management



Janine Beasley

As of August 16, 2013, 115 members are listed for the 2012-2013 year. Among these are 2 new members, and 1 reinstating membership and joining Birmingham, additionally.

Website changes:

Uploaded Spring and Summer MMT.

Updated calendar.

Changed bylaws to reference MTNA code of ethics at mtna.org instead of having wording embedded in the bylaws.

Changed guitar area chair to Michael Patilla.

Added approved minutes.

Updated resources with judge compensation sheet.

Added MAC Grant news release.

Went through the website and updated with changes (certification chair, links to MTNA pages: certification, membership, general liability insurance, copyright footer).

Changed Stephanie Holmes email, including News tab and Officers page.

Website addition:

Added a new tab to the left of the page: **Links**. If there are any pertinent links to other websites, these should go here. I have started with Local Associations (so far only Hattiesburg is listed). If your association has a website, please let me know and I will add it to this page. Local associations listed here should also include a link to the state website, on the local website.

Ongoing: miscellaneous updates as needed.

Continue to send mass emails to members as requested.

Working to get member list up-to-date with most current information. Unpaid members will be deleted if they have not paid dues by September 30. A message has been sent to the MMTA member list concerning the possible deletions.

Respectfully submitted,
Janine Beasley

Vice President for Pre-College Performances

I am excited to visit MUW and Columbus for the MMTA State Conference on November 1-2. It will be great to see the transformation Poindexter Hall has experienced through its recent renovations. As a child, I lived within an hour's drive of MUW and this university was my personal mecca for live musical performances, so I love it dearly.



Alice Ballard

The Pre-College Concerto Competitions will take place on Saturday, November 2 during the Conference. Remember the guidelines: This

competition is open to all instruments, entrants must perform one movement of a standard concerto from memory, and students must provide their own accompanist, but teachers may accompany their own students. Last year, the number of entrants rose dramatically, and I hope this trend continues!

The Pre-College Concerto application and other information about the competition is located under the *Student Activities* section on our MMTA website. The web page is <http://msmusicteachers.org/competitions-precollege-concerto.php> Please note that October 1, 2013 is the deadline for submission of application forms and fees.

Regarding the 2014 District Evaluations, Group A will go first. Their auditions will be on April 5, followed by Group B's auditions on April 12. For more details, visit the *Calendar* link on our MMTA webpage. Also, the MMTA Pre-College Finals are expected to be held in the southern region of the state. Negotiations with a host institution are underway, so please check the *Calendar* page for details, to be posted.

Everyone – please keep up your important work with young musicians. It matters!

Respectfully submitted,

Alice Ballard

Vice-President for Collegiate and National Competitions



Rosângela Sebba

Dear MMTA Members,

The deadline to apply for MTNA competitions is approaching – September 11 at 3:00 PM Eastern Time. I would like to encourage you to enter your pre-college and college students in the competitions and participate in our conference events.

The conference will be held at Mississippi University for Women in Columbus-MS on November 1 and 2. Competitions will take place only on the first day – November 1. Some changes have been placed for the 2013-2014 MTNA Student Competitions, see below:

1. **The Chamber Music Competition became two Competitions:** String and Wind, with each competition having its own winners and awards
2. **A rule change made it possible for players/entrants to perform in more than one ensemble.** Thus a pianist in a piano trio can also perform as the pianist in another trio or piano quartet and the like, in the same competition. This makes it possible for a college or university to enter more than one ensemble using some of the same personnel. We must remember that ENSEMBLES and not individuals are competing
3. The **average age** of the members in an ensemble must be between 18 and 26 years. This allows for a range of varying ages among the performers in any group
4. **The addition of voice (maximum of two voices) will be an optional part of competing ensembles.** Repertoire containing voice in any part of an ensemble's program must be chosen from a given list of original (no transcriptions or arrangements) compositions attached to the Competitions Rules
5. **Online application will be available in August** and mailed, faxed, or emailed entries will not be accepted
6. Competitions include:
 - ✓ Elementary Compositions (ages 5-10);
 - ✓ Junior Piano, String and Woodwind Performance and Composition (ages 11-14);
 - ✓ Senior Brass, Piano, String, Voice, Woodwind Performance and Composition (ages 15-18);
 - ✓ Senior Piano Duet one piano/four hands (ages 11-18);
 - ✓ Young Artist Brass, Piano, String, Voice, Woodwind Performance and Composition (ages 19-26);
 - ✓ Chamber Music Performance between 3-6 performers (ages 18-26), see changes above;
 - ✓ These ages must be attained as of January 1, 2014.

This is a great opportunity for our students to demonstrate their skills as performers and composers. Please encourage your institutional colleagues who are members of MTNA to enter their students. For more detailed information about competitions please go to MTNA website: <http://www.mtna.org/programs/competitions/>, and if you have any question, please contact Dr. Rosângela Sebba, VP for Collegiate and National Competitions, at rys3@colled.msstate.edu

See you at MUW in Columbus-MS.

Rosângela Sebba

Vice-President for Pre-College Evaluations

I hope everyone has had a good summer and is getting back into the swing of things with fall lessons starting up!

As we go into the fall, look for some updating and tweaking to the syllabus as we work to see that students of all instruments are graded in a similar manner at the spring evaluations. All instruments, including voice, strings, guitar, brass and woodwinds, will be graded on the 100 point scale in each of the four basic categories -- solo performance, technique, sightreading, and written theory. This will give every student the opportunity to compete for the high composite score award in their level. The changes should be complete by November 1, and you should receive an email once the changes have been uploaded to the website.

The 2014 Spring Evaluations will be held the first two Saturdays in April. Group A -- Goodman, Hattiesburg, Jackson, Meridian & Tupelo -- will hold theirs on April 5, 2014; Group B -- Columbus/Starkville, Ellisville, Gulf Coast, Oxford, & Vicksburg -- will hold theirs on April 12, 2014.

Respectfully submitted,

Dixie Lawson

Certification?

Why bother?

Join us at the MMTA Conference at MUW and share your reasons "to be or not to be" - Certified! Find us in the Conference Schedule.

Jacquelyn Sullivan Thornell, NCTM

In Memoriam

MMTA extends sympathy to Janet Gray and Carol Schutzmann in the loss of their husbands this summer.

Please see the following links for obituary and memorial information:

<http://obits.dignitymemorial.com/dignity-memorial/obituary.aspx?n=Herman-Gray&lc=7258&pid=165327474&mid=5567523>

<http://www.legacy.com/obituaries/sunherald/obituary.aspx?pid=165139228#fbLoggedOut>

Jones County Junior College Music Department

900 S. Court St.
Ellisville, Mississippi 39437
(601) 477-4094

Susan A. Smith, Chair

***Sammy Barr, Band
Mike Boyd, Guitar
Jeff Brown, Percussion
Kay Guiles, Piano/Organ***

***Jonathan Helmick, Low Brass/Band
Nikki Johnson, Theater/Voice***

***Victoria Johnson, Piano
Meri Newell, Woodwinds
Patrick Richards, High Brass
Theresa Sanchez, Piano
Susan A. Smith, Voice/Theory/Choir
Gregory Wascoe, Voice***

www.jcc.edu/programs/finearts

Gulf Coast Music Teachers Association



Founded 1972

Affiliate News



In June, Music Forum of Jackson had a summer board meeting in the home of Jane Duran Fox, our President. This meeting was to reflect on our previous year and plan for the coming school year.

Jacquelyn Thornell, our program chair, has scheduled our first program on Saturday, September 28, to be held at the Municipal Art Gallery in Jackson. The program will be presented by Jackie Edwards-Henry, pedagogy professor at Mississippi State University. The topic of her lecture is "Improvise to Learn" which will focus on the use of improvisational activities to introduce and solidify concepts with students.

Our annual Sonata Sonatina Festival will be held on November 23 at Millsaps College with Patsy Simpson and Donna Reed as co-chairs. This is a grand way to showcase our students in recital.

Our Music Forum of Jackson Pianothon will once again be held at Northpark Mall on December 14. This holiday event has become quite popular with our students. Dot Bittick chairs this event.

On February 1, 2014, we will host our Forty-Fifth Bach Festival at Hinds Community College, Raymond with Carol Durham as chair. We welcome teachers throughout the state (and even beyond) to enter students in this event to celebrate the Baroque style and its influences.

The MMTA Pre-College Evaluations will be held at Hinds Community College, Raymond, on April 5, 2014, chaired by Kay Johnson.

The board of Music Forum of Jackson has planned an eventful year for our teachers and students to share programs, festivals, and fun together.

Respectfully submitted,

Jane Duran Fox, MM
President MFOJ

Hattiesburg Music Teachers League

Fall 2013 will be a busy semester for the HMTL! We will begin our year with a general business meeting and program scheduled for September 14 at USM. Following the business meeting, JCJC music faculty members Gregory Wascoe, Baritone, with Dr. Theresa Sanchez, piano, will perform a vocal recital of oratorio and operatic arias, art songs and musical theatre selections.

On October 26, we will hold student recitals in the recital hall at Mississippi Music. These student recitals afford excellent opportunities for our students to gain invaluable performing experience in front of an audience.

The highlight of the fall semester will be our biennial Composer Festival, scheduled for November 22 & 23, which will feature the music of guest composer, Mary Leaf. Our Composer Festival Chair, Dr. Victoria Johnson, has been hard at work since 2012 organizing the many details of the festival. On Friday, November 22, there will be a 2-hour workshop for teachers with Mary Leaf. Student recitals of Mary Leaf's music will be held on Friday evening and Saturday morning. Autograph parties with the composer will follow each student recital for the participating students and their families and teachers. The 2013 Composer Festival promises to be an exciting event for the league!

Respectfully submitted,

Laura Broughton, D.M.A., NCTM

HMTL President





JONES COUNTY MUSIC TEACHERS ASSOCIATION

Janine Beasley, President

August 17, 2013

A meeting was held July 14, 2013 to choose new officers and committee members, and to determine dates for Showcase Recital, Solo-Sonata Competition, and Ensemble Festival. Music for Solo-Sonata Competition and Ensemble Festival was also selected.

A luncheon meeting will be held at Morgan's on Main in Collins on August 23, 2013.

JCMTA has been invited to participate with Hattiesburg Music Teachers League on Saturday, September 14, 2013 in a meeting at University of Southern Mississippi, PAC Choral Hall. The program will feature Greg Wascoe, accompanied by Theresa Sanchez.

The JCMTA annual Showcase Recital will be held on Sunday, November 17, 2013. Student performers and composers will be highlighted at this event.

The JCMTA annual Solo and Sonata Competition will be held on Saturday, January 25, 2014. The competition is for students sixth through twelfth grade.

JCMTA will hold its annual Ensemble Festival in February or March, 2014, exact date to be determined.

Business meetings will be held prior to the above events.

Jones County Music Teachers Association will participate in the Ellisville area MMTA Evaluations in March or April 2014, exact dates to be determined, at Jones County Junior College.

Respectfully submitted,
Janine Beasley



Gulf Coast Music Teachers Association
Affiliated with Mississippi Music Teachers Association
and Music Teachers National Association
Est. 1972

August 17, 2013

The planning meeting of the GCMTA Board, held at the president's home on July 31, 2013, over coffee cake, was productive, and we are anticipating a stimulating and fruitful year for our teachers and students. The Board approved our continuing to offer a rebate for half the membership dues to new members. We anticipate 6 – 8 new members coming on board.

Elsie Barnes, our vice-president and program chair, outlined the programs for the upcoming year. On September 21, Ellen Elder of USM will do a presentation on "Preparing the Student for the Bach Fugues Through His Other Works" at Gulfport First Presbyterian Church. Joanna Burnside and Daniel Vernon, both professors at MGCCC-Perkinston, will collaborate in a vocal and lecture recital on November 9, at Mississippi Music in Gulfport. High school students and their parents will be especially encouraged to attend this program, with its emphasis on preparing for college as a music major. On January 18, 2014, Lois Leventhal will teach a master class at St. Patrick's Episcopal Church in Long Beach. Business meetings will be held prior to these programs.

The Music Teachers Festival will be held on February 22. The membership will vote on opening this event to students of non-members. Dawn Nelson is Festival chairman. Our local Pre-college Evaluations will take place on April 12, at MGCCC-JD. Rebekah Lipscombe is the chairman. The Senior Awards Recital is scheduled for April 27, at Bible Fellowship Church in Pass Christian.

The end-of-year luncheon and business meeting to elect the Executive Committee officers will be held on May 29, 2014.

Thanks to Web and Membership Manager Joanna Burnside, we have a beautifully-developed and highly useful website. Please take a look at www.gcmusicteachers.com. She reported that the history of our organization will soon be posted on our website. As certification chairman, Joanna reported that we have one member currently pursuing certification, with others also having voiced an interest in becoming certified. She reported on the need for an amendment to the Code of Ethics as recommended by MTNA. The proposal has been submitted to the membership for a vote at the September meeting.

I am looking forward to serving alongside our dedicated Board members this coming year as our membership base is increasing in numbers and enthusiasm.

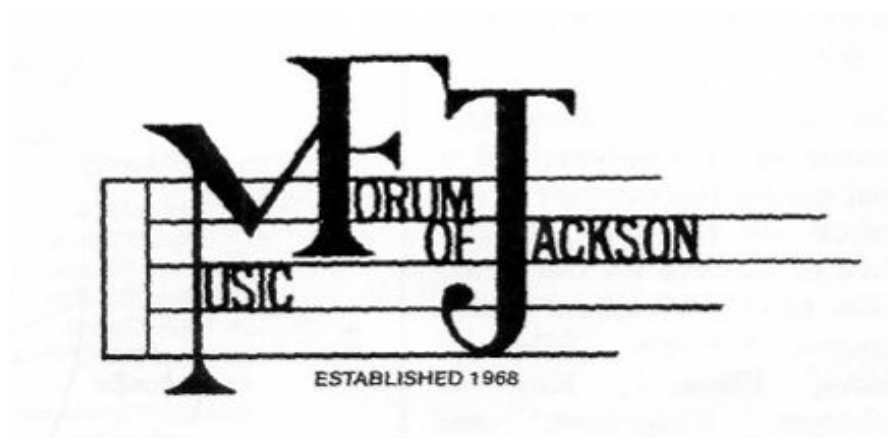
Respectfully submitted,
Carol Mahler, GCMTA President

The **Vicksburg Music Teachers Association** sketched out the 2013-14 season way back in June, and we have all begun a busy teaching year. We begin with our annual Boys Recital, right before Halloween. The guys really enjoy the opportunity to perform in costume if they wish, and the recital always creates solidarity among the male music students of Vicksburg.

We are grateful to the Mississippi Music Teachers Association Board for approving our request for a grant to hold an American Music workshop and master class on November 9. Dr. Valentin Bogdan of Mississippi University for Women has agreed to facilitate this event, set at the Southern Cultural Heritage Center.

Looking ahead to the new year, Vicksburg will host the annual "Pipes, Pedals, and Pizza," given by members of the American Guild of Organists. Students can play part of a prepared piece on one of our glorious pipe organs in town, learn about the instrument, and have pizza for lunch. We have also scheduled several recitals, including one devoted to Sacred Music, another for Ensembles, and our annual Vicksburg Honors Recital, for students who earn a "Superior" rating at the local Evaluations.

Respectfully submitted,
Jeanne Evans



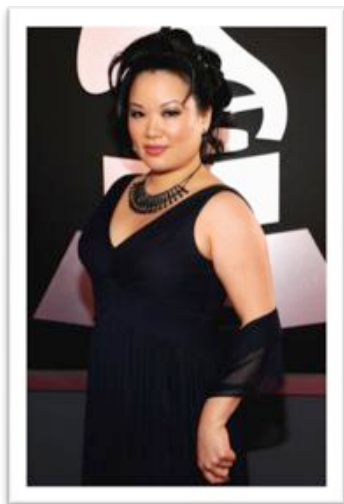
Jane Duran Fox, President

Music Forum of Jackson was founded April 1968 and
is affiliated with MMTA and MTNA.

2013 Conference

November 1 – 2

Mississippi University for Women, Columbus



Angelin Chang, pianist – Conference Artist – Our concert artist is Professor Angelin Chang, Grammy award winning pianist.



John Ellis – Guest Piano Clinician – Professor John Ellis, from the University of Michigan, is our guest clinician. He will present three pedagogical sessions and a master class.



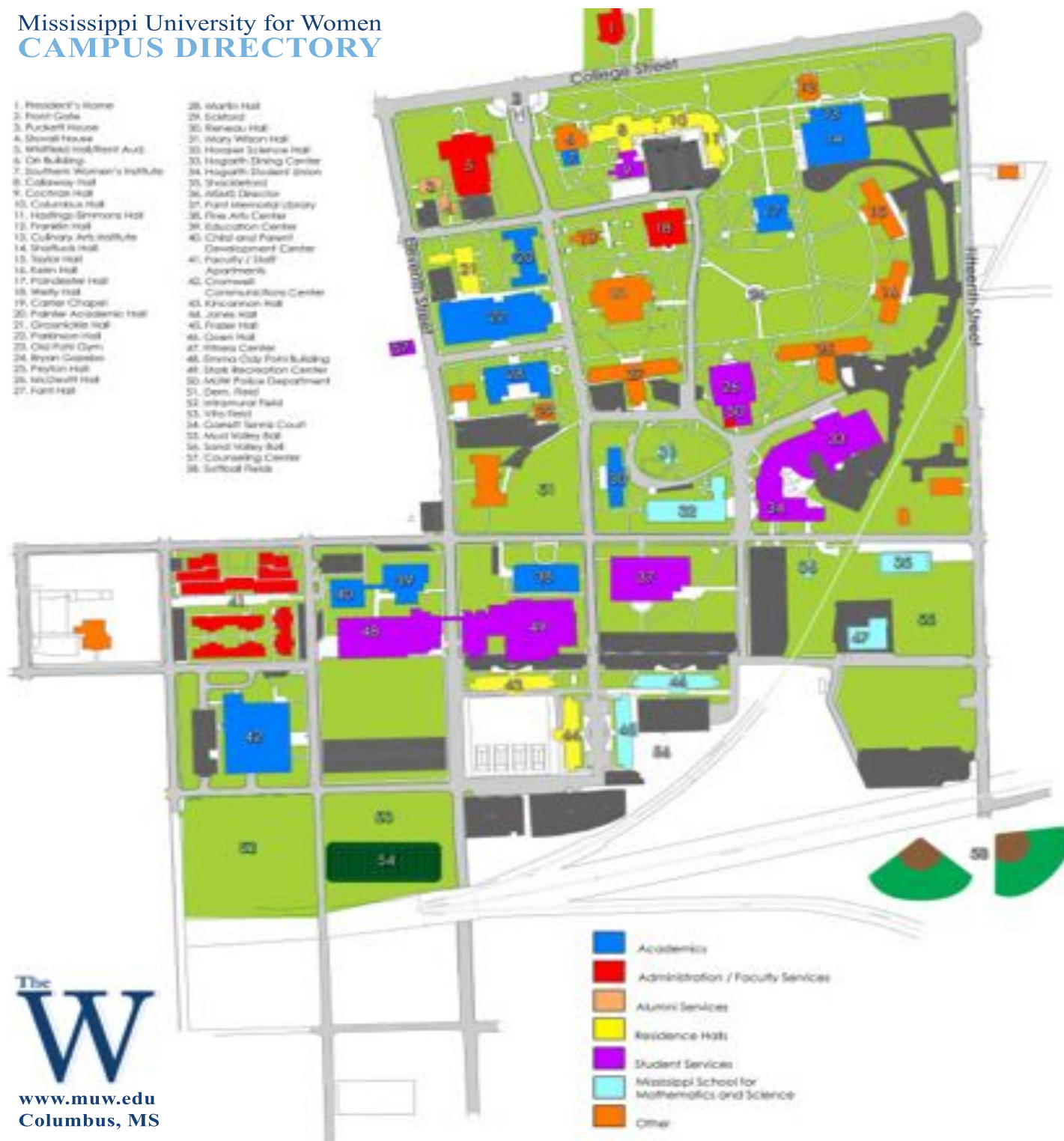
Judith Fairchild – IMTF Luncheon Speaker and Judge of Pre-College Piano Concerto Competitions – Our IMTF speaker, Judith Fairchild will present on the topic, “Thoughts on Teaching Beginners.”



Ken Davies – Commissioned Composer – Ken Davies is our commissioned composer. His trio for trumpet, trombone, and piano entitled “Collage” will be premiered Friday evening.

Other presentations will be given by Julia Mortyakova, Ian Hominick, Valentin Bogdan, and Karen Murphy, as well as a two-piano concert by Lisa Fairchild and Jennifer Lee.

Mississippi University for Women CAMPUS DIRECTORY



www.muw.edu
Columbus, MS

2013 MMTA Conference Schedule
November 1-2, 2013 at Mississippi University for Women
(Please check conference program book for possible schedule changes and room assignments)

Friday, November 1:

8:00 a.m. – Conference registration; MTNA competition registration

8:15 a.m. – MMTA Board meeting

9:00 a.m. – Member presentation: Dr. Julia Mortyakova (MUW) – “Olga Harris: Piano Method for Beginners”

MTNA competitions begin

10:00 a.m. – Member presentation: Dr. Ian Hominick (Ole Miss)

11:00 a.m. – Dr. Valentin Bogdan (MUW) presentation--“Inviting the Widest Possible Audience: An Analysis of Community Outreach and Engagement Techniques Used to Introduce Classical Music to New Listeners”

12:00 p.m.--Past Presidents’ Luncheon – Harvey’s Restaurant, 200 Main St.; Columbus 39701

12:00 p.m. – Lunch “on your own” for conference attendees

1:00 p.m. – Prof. John Ellis, guest clinician presentation: "Motivating Teenagers to Stay at the Piano"

2:00 p.m. – New Faculty Recital

3:00 p.m. – Prof. John Ellis, guest clinician presentation: "Moving from Intermediate to Advanced Repertoire through Etudes"

4:00 p.m. – Member presentation: Dr. Karen Murphy (MSU) – “Developing Piano Technique with German Lieder Accompaniments”

5:00 p.m. – Commissioned Composition Performance of “Collage” --(Ken Davies, composer) Performed by the Me-We Trio (Dr. Jason Bergman, trumpet; Dr. Ben McIlwain, trombone; Dr. Ellen Elder, piano).

6:00 p.m. – Conference Banquet – Pope Banquet Room. Barbara Tracy, MMTA President, presiding

7:00 p.m. – MUW student poster session will precede the guest artist recital

7:30 p.m. – Guest Artist Recital – Angelin Chang, Grammy award winning pianist – Kossen Auditorium

Reception following recital hosted by Golden Triangle Music Forum

Saturday, November 2:

8:00 a.m. – MMTA Business meeting

8:30 a.m. – Prof. John Ellis, guest clinician presentation: "A method for children by Marguerite Long"

9:30 a.m. – Piano Masterclass with Prof. John Ellis – Kossen Auditorium

10:30 a.m. – Presentation/masterclass with Angelin Chang

10:30 a.m. – Recital featuring gold medal winners from 2013 MMTA pre-college evaluations.
Alice Ballard, VP for Pre-College Performance presiding

11:30 a.m. – Two-piano concert featuring Lisa Fairchild and Jennifer Lee – Kossen Auditorium

12:30 p.m. – IMTF luncheon with Judith Fairchild – "Thoughts on Teaching Beginners"
Dr. Victoria Johnson, IMTF Chair, presiding

1:45 p.m. – Registration for pre-college concerto competitions

2:00 p.m. – Pre-college concerto competitions

For driving directions, visit <http://web3.muw.edu/campusmap>.

MMTA 2013 CONFERENCE REGISTRATION FORM
2013 MMTA CONFERENCE, November 1-2, 2013
Mississippi University for Women—Columbus, MS

Please mail your Conference registration, Banquet, and IMTF Luncheon fees
along with this form by **OCTOBER 25** to:

Ellen Elder
1116 Poplar Rd.
Hattiesburg, MS 39401

The Conference advanced registration fee includes the Conference Program Book as well as admission to all workshops, lectures, and concerts during the 2013 Conference. Your materials and name tag will be available at the Conference registration desk. Registration fee for MMTA members and non-members is \$25. College and Pre-college students may attend at no cost.

Please note that the Guest Artist Concert on Friday evening at 7:30 PM (Angelin Chang, pianist) is open to the public with no admission charge.

Our annual conference presents opportunities for professional development, networking, and assistance in MTNA certification. We will offer a certificate of attendance and/or CEU's for any student or teacher requiring documentation.

Registration fees will also be accepted at the Conference registration desk.

Friday evening Banquet fees and the Saturday IMTF Luncheon fees **MUST BE PAID IN ADVANCE.**

I am enclosing payment for the following (please indicate your preference):

_____ **MMTA MEMBER OR Non-Member REGISTRATION FEE – \$25**

_____ **College or Pre-college student REGISTRATION - free**

_____ **BANQUET FEE – \$18.45 (buffet):**

Parmesan Crusted Chicken, Vegetarian Lasagna, Roasted Pork Loin; Roasted Red Potatoes, Green Beans, Rice Pilaf, Sautéed Zucchini and Squash; Tossed Salad with Assorted Dressings and Rolls with Butter; Boston Cream Pie and Strawberry Cake; Coffee/Tea/Water

_____ **IMTF LUNCHEON FEE – \$9.95 (please choose from the following boxed lunch options. All lunches come with chips, cookies, assorted canned sodas, or bottled water.**

☐

1. Turkey

☐

2. Ham

☐

3. Roast Beef

☐

4. Veggie

\$_____ TOTAL ENCLOSED (make checks payable to MMTA)

Information for Conference name tag:

NAME: _____

MMTA LOCAL AFFILIATE/OFFICE/SCHOOL/Other: _____

I would like a Certificate of Conference Attendance/CEU. ____ YES ____ NO

Please check this box if you would like MTNA/MMTA membership information ☐

Hotel Information

Fairfield Inn and Suites (2011 N. 6th St., Columbus, MS 39701)

Rooms with Single King and Two Double Beds are available on 10/31 and 11/1 for \$94 plus tax

Call the front desk at (662) 241-1990 and reserve a room using the Group Reference Code “MMT”

Please make reservations by 10/17/2013.

Other hotel options in Columbus:

Best Western Executive Inn

303 Shoney Drive – (662) 329-2255

National reservations: (800) 528-1234

Days Inn

1133 Highway 45 North – (662) 329-4545

National reservations: (800) 329-7466

Wingate Inn

129 Brickerton Street – (662) 327-9999

National reservations: (800) 228-1000

Mark Your Calendar

**November 1-2, 2013 - Fall 2013 MMTA Conference - Mississippi University for Women,
Columbus, MS**

**November 1, 2013 - MTNA State Competitions, Mississippi University for Women, Columbus,
MS**

January 17-20, 2014 - 2014 MTNA Southern Division, Louisville, KY

**March 1, 2014 - MMTA Collegiate Competitions, Mississippi University for Women, Columbus,
MS**

March 22-26, 2014 - 2014 MTNA Conference, Chicago, IL

**April 5, 2014 - Pre-College District Evaluations, Group A (Goodman, Gulf Coast, Hattiesburg,
Jackson, Meridian, and Tupelo)**

**April 12, 2014 - Pre-College District Evaluations, Group B (Columbus/Starkville, Ellisville,
Oxford, and Vicksburg)**

April 26, 2014 -- MVSU Piano Festival, Itta Bena, MS

May 17, 2014- MMTA Pre-College Finals, The University of Southern Mississippi, Hattiesburg

*Do you have an event you would like to be placed in the Mississippi Music Teacher? Contact Stephanie
Holmes at sholmes057@gmail.com.*

Mississippi Music Teacher is published online three times per year. Address all communications, articles, and pictures to the Editor. The MMT is available to the public on the MMTA website in PDF format.

ADVERTISING: Limited advertising space is available for firms or individuals who have a product or service of specific interest or benefit to MMTA members. All correspondence regarding advertising should be sent to the VP for Public Relations.

YEARLY ADVERTISING RATES (size in inches)

2 ¼ x 1	\$70	2 ¼ x 2 ¼	\$120
2 ¼ x 4 5/8	\$170	2 ¼ x 7	\$240
4 5/8 x 4 5/8	\$275	4 5/8 x 7 (half page)	\$500
7 x 9 ¼ (full page)	\$900		

Conference printed edition ads can be purchased for that one edition for 1/3 of the above prices.

MMTA Officers

President

Barbara Tracy
617 Holly Ridge Drive
Vicksburg, MS 39180
Phone: 601-638-3453
barbara9872@att.net

President Elect

Ellen Price Elder
116 Poplar Road
Hattiesburg, MS 39401
Phone: 601-467-9745
Work: 601-318-6179
ellen@ellenelder.com

Immediate Past President

Ian Hominick
432 Cherokee Drive
Oxford, MS 38655
Phone: 662-513-4994
Work: 662-915-1282
ihominic@olemiss.edu

VP for Membership & Web Management

Janine Beasley
3122 N 5th Ave.
Laurel, MS 39440
Phone: 601-649-9240
music@beasinc.com

VP for Collegiate & National Competitions

Rosangela Yazbec Sebba
P.O. Box 6240
Mississippi State, MS 39762
Phone: 662-325-2854
rys3@colled.msstate.edu

VP for Pre-College Performances

Alice Ballard
Hinds Community College
P.O. Box 1100
Raymond, MS 39154
Phone: 769-226-7038
Work: 601-857-3528
Alice.Ballard@hindsccl.edu

VP for Pre-College Evaluations

Dixie Lawson
29 Scarlett Street
Purvis, MS 39475
Phone: 601-268-6216
musicmom1986@comcast.net

VP for Public Relations (Newsletter Editor)

Stephanie Holmes
226 Hillcrest Drive
Kosciusko, MS 39090
Phone: 662-417-1390
seholmes2@hotmail.com

Secretary

Yvonne Young-McGrath
753 Canterbury Dr
Biloxi, MS 39532-4303
Phone: 228-617-9127
mcmomx4@hotmail.com

Treasurer

Michael Rushing
1034 RN Whitfield St.
Florence, MS 39073
Phone: 601-573-1068
mrushing@mc.edu

Appointed Officers**Chair of Theory & Composition**

Benjamin Williams
1221 Cliffdale Dr
Clinton, MS 39056
Phone: 601-925-7739
benwilliams@mc.edu

Chair of Independent Music Teachers Forum

Victoria Johnson
900 South Court Street
Ellisville, MS 39437
Phone: 601-477-2674
victoria.johnson@jcjc.edu

Chair of College Faculty Forum

Angela Willoughby
100 Murial St
Clinton, MS 39056
Phone: 601-906-8040
willough@mc.edu

Chair of Certification

Jacqueline Thornell
5929 Lake Terrace Circle
Jackson, MS 39211
Phone: 601-952-0060
jsthornell@bellsouth.net

Assistant to the VP for Public Relations

Position not filled

Webmaster

Handmade Designs
Toll Free 1-877-467-2660
www.handmadedesigns.com

Performance Area Chairs**Brass**

Douglas Mark
Delta State University
Department of Music
PO Box 3256
Cleveland, MS 38733
Phone: 662-846-4607
dmark@deltastate.edu

Chamber Music/Jazz

Jung-Won Shin
Delta State University
Department of Music
PO Box 3256
Cleveland, MS 38733
Phone: 662-846-4123
jshin@deltastate.edu

Guitar

Michael Patilla
Mississippi State University
Music Building A
Mississippi State, MS 39762
Office: 662-325-2866
guitar@colled.msstate.edu

Piano

Elizabeth Moak
609 Woodbine Lane
Hattiesburg, MS 39402-2050
Phone: 601-268-5524
elizabeth.moak@usm.edu

Strings

Alexander Russakovsky
University of Southern Mississippi
School of Music
118 College Drive, # 5081
Hattiesburg, MS 39406
Phone: 601-266 6851
arussakovsky@hotmail.com

Voice

Phyllis Lewis-Hale
Jackson State University
Department of Music
P.O. Box 17055
Jackson, MS 39217
Phone: 601-979-2984
phyllis.lewis-hale@jsums.edu

Woodwinds

Shelley Collins
Delta State University
Department of Music
PO Box 3256
Cleveland, MS 38733
Phone: 662-846-4617
scollins@deltastate.edu

Collaborative Arts

Theresa Sanchez, NCTM
907 N 34th Ave
Hattiesburg, MS 39401
Phone: 601-271-8700
theresa.sanchez@jcjc.edu

Local Affiliates**Golden Triangle Music Forum**

Ricki Prewitt
11 Lakes Boulevard
Starkville, MS 39759
Phone: 662-324-9393
Cell: 662-312-3136
rprewitt62@att.net

Gulf Coast MTA

Carol Mahler
9428 Hidden Acres Road
Pass Christian, MS 39571
Phone: 228-586-1879
jmdoc@bellsouth.net

Hattiesburg Music Teachers League

Laura Broughton
29 Park Place, Apt. 1101
Hattiesburg, MS 39402
Phone: 601-441-1248
drLaurab@comcast.net

Jones County MTA

Janine Beasley
3122 N 5th Ave.
Laurel, MS 39440
Phone: 601-649-9240
music@beasinc.com

League of Meridian Music Teachers

June Williams
100 38th St.
Meridian, MS 39301
Phone: 601-482-4107

Music Forum of Jackson

Jane Duran Fox
2209 Heritage Hill Drive
Jackson, MS 39211
Phone: 601-981-6607
janeduranfox@gmail.com

Music Forum of Tupelo

Peggy Oakes
2012 Strain St.
Tupelo, MS 38804
oakesp@bellsouth.net

Vicksburg MTA

Jeanne Evans
3140 Drummond St
Vicksburg, MS 39180-4912
Phone: 601-634-0826
ajejans88@bellsouth.net

From the MMT Editor

Our Fall Conference is a little over a month away! I'm excited about the line up we have for this year's conference. We are going to have great presentations, great music, and a great chance to catch up with our colleagues from around the state.

Ellen Elder and Julia Mortyakova have been instrumental in planning this year's conference. When you see them, be sure to thank them for all of their hard work.

See you at MUW!



Stephanie Holmes
Editor

MISSISSIPPI MUSIC TEACHER

Stephanie Holmes, editor

226 Hillcrest Drive
Kosciusko, Mississippi 39090



Mississippi Music Teachers Association

Est. 1954

The purpose and goals of the Mississippi Music Teachers Association are to further the art of music, and promote the growth and professional development of its members by providing programs that encourage and support teaching, performance, composition and research. MMTA is a not-for-profit organization whose funds are used solely to accomplish these objectives.